

## **Historic, Archive Document**

Do not assume content reflects current scientific knowledge, policies, or practices.





G. W. Leak

Belle  
Jaune

Bleu Aimable

# NELIS

*Nurseries*

Incorporated

**Holland  
Michigan**

LIBRARY  
RECEIVED  
MAY 29 1952 ★  
U.S. Department of Agriculture

Carrara

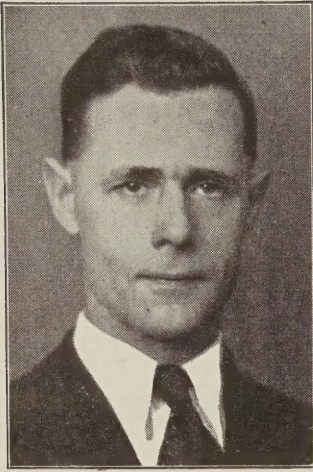
Scarlet Beauty

Black  
Eagle

## NELIS NURSERIES *Cover Collection*

Belle Jaune, Black Eagle, Carrara,  
Scarlet Beauty, Bleu Aimable,  
G. W. Leak.

- 3 each, separately labeled  
( 18 bulbs) ..... \$ 2.75
- 6 each, separately labeled  
( 36 bulbs) ..... 5.00
- 12 each, separately labeled  
( 72 bulbs) ..... 9.25
- 25 each, separately labeled  
(150 bulbs) ..... 17.00
- 100 each, separately labeled  
(600 bulbs) ..... 61.50



HARRY NELIS,  
General Manager

# Greetings

## FROM THE CITY OF TULIPS

The 1952 Festival dates for "Tulip Time" are set for May 14th to 17th. However, the blooming dates are during the month of May, and if you wish to come to see the greatest amount of Tulips in bloom, please be guided by your local weather conditions, for the blooming season will depend on whether the season is early or late. If in doubt, we will gladly advise you, if you write in and request the information.

# NELIS FAMOUS RAINBOW COLLECTION

## Guaranteed Blooming Size Bulbs

### For Less Than 6¢ Each in 100 Lots

Known for Years for its OUTSTANDING COLORFUL MIXTURE, Consisting of over 150 varieties.

### Nelis TULIP CITY COLLECTION

The following blooming size bulbs are offered to you at a remarkable saving in price. The average size of the bulbs offered here is from 1 1/8 to 1 1/4 inches in diameter, which is smaller than the exhibition size, as offered on the other pages of our catalog. This size is ideal for mass planting and for cutting purposes. All varieties are separately packed and labeled.

Avalanche  
Black Eagle  
Eclipse  
Grenadier

King George  
Madame Butterfly  
Red Signal  
Yellow Giant

6 each of 8 varieties ( 48 bulbs, labeled) ...\$ 3.75  
12 each of 8 varieties ( 96 bulbs, labeled) ... 6.90  
25 each of 8 varieties (200 bulbs, labeled) ... 13.75  
100 each of 8 varieties (800 bulbs, labeled) ... 52.00

Do not confuse these with all kinds of cheap offers you read about today, which because of the small size bulbs supplied, give no satisfaction. NELIS BLOOMING SIZE RAINBOW and TULIP CITY COLLECTIONS are guaranteed to bloom one hundred percent the first year after planting.

#### Available in Two Sizes as Follows:

Blooming size, 3 3/4 inches in circumference, or 1 1/8 to 1 1/4 inches in diameter.

50 for .....	\$3.25	250 for .....	\$14.25
100 for .....	5.90	1000 for .....	55.00

TOP SIZE, averaging 4 to 5 inches in circumference, or 1 1/4 to 1 1/2 inches in diameter.

This assortment is our own mixture and consists of some of all the varieties we grow. In a collection of 100 bulbs you will find it difficult to find 2 flowers exactly alike.

50 for .....	\$4.85	250 for .....	\$22.00
100 for .....	9.00	1000 for .....	85.00

(At the close of the season, we may be sold out of a certain variety, therefore, we wish to reserve the right to substitute with varieties of the same color if possible. Order EARLY to receive the varieties named.)



# AN Important MESSAGE —

FRED NELIS, Pres.  
HARRY NELIS, Sec'y-Treas.



## NELIS NURSERIES, Inc.

Bulb Growers Nurserymen Importers

Specializing in Tulip Bulbs

HOLLAND, MICHIGAN

April 1st, 1952

DAFFODILS  
HYACINTHS  
LILIES  
PERENNIALS  
EVERGREENS  
FLOWERING  
SHRUBS

Dear Customer:

We are pleased to present to you our Planting Guide for 1952.

This list has been carefully revised and to our knowledge the latest varieties have been listed. A great many Tulips are being tested again this year and may be seen on our display field. The best ones will probably be listed in some of our future catalogs, but before they are, we want to be sure that they are going to please you and us.

We are sorry to say that there is an extreme shortage in Hyacinths and Crocus, but there will be enough stock of other items available.

We want to thank all our customers for their continued patronage and we are consistently striving to deserve this trust.

Yours very truly

NELIS NURSERIES INC.

*Harry Nelis*

Harry Nelis, Sec'y-Treas.

### A Special Request:

The cost of printing this catalog for you is consistently rising and many companies are starting to charge for their price lists. We are not in favor of this; however, we would appreciate it if you would pass your catalog along to a neighbor or a friend in the event that you should have no need for any of the merchandise listed. If you are in the habit of saving these catalogs for future reference, we shall be glad to send a copy to anyone you know who would be interested in receiving it, if you let us know by letter or card. We wish to thank you for this favor.

## GUARANTEE

Except where clearly stated otherwise in this catalog, we unconditionally guarantee every bulb we ship out to be strictly top size, and to be absolutely true to name. All bulbs shipped by us will grow and bloom under ordinary conditions. We have, however, no control over unfavorable weather or soil conditions, improper planting, neglect, moles or mice, and therefore cannot assume responsibility after they reach you. Stock not reaching you in first class condition should be reported within 10 days after receipt, and will be replaced free of charge if so received. After ten days it is mutually agreed that stock is satisfactory. Do not return bulbs or plants unless so instructed by us.

— **ORDERS FILLED AS RECEIVED**

# Latest Novelty and

It has been our policy for years to show to the American public, at our extensive display fields, the latest varieties available in Tulip bulbs. Our 1952 listing is as nearly complete as can be desired, and contains varieties which probably will not be handled by the average seedsman or grower for another decade.



Southern Cross

NOVELTY TULIP COLLECTION		
20	Bulbs (1 each of the varieties listed, labeled)	\$ 5.65
60	Bulbs (3 each of the varieties listed, labeled)	15.00
240	Bulbs (12 each of the varieties listed, labeled)	49.50

	Per 3	Doz.	100
<b>ALICE TIPLADY.</b> 26 in. An unusual, delicately shaded flower of soft cream to soft orange blend, listed by the originator as "champagne" color. The pointed petals are slightly tipped lavender	\$1.00	\$3.25	\$24.00
<b>BLACK GIRL.</b> 28 inches. Outstandingly lovely, the darkest of the so-called "Black Tulips." Medium sized flowers, strong, sturdy growth. Especially lovely when planted with light Tulips for contrast	.50	1.75	12.00
<b>BLUE PERFECTION.</b> 26 inches. A refined flower of lavender-blue, in which the blue predominates. Medium size with pointed petals	.50	1.75	11.50
<b>ELIZABETH ARDEN.</b> 26 inches. Immense flower of dark salmon with rosy lavender overtone. The inside of the petals is of a vivid salmon-red. An outstanding novelty	1.30	4.35	33.00
<b>FIELD MARSHALL.</b> The first really high classed cream colored Tulip we have ever been able to offer. A very large flower of good form	.75	2.50	18.00
<b>FLAMING YOUTH.</b> 14 inches. Immense flower of flaming orange, the foliage, unlike Tulip foliage, resembles the foliage of the Colchicum and is of a brilliant, shiny and glossy green. A truly striking variety	.85	2.75	21.00
<b>GEORGE DICKS.</b> 30 inches. A beautiful salmon-pink variety of enormous size. A glorified Clara Butt Tulip.	.60	1.85	13.00
<b>KING MAUVE.</b> 29 inches. One of the most imposing Tulips of this color. The gorgeously rich, purplish mauve flowers are of large size and perfect form. Very strong, tall stem	.50	1.75	12.00
<b>MARIE NICHOLSON.</b> 29 inches. Outstandingly beautiful rose-red with a glossy sheen. A Tulip of fine shape and great strength. Named for the first president of the American Tulip Society. A Nelis introduction.	.60	1.85	13.00
<b>MOUNT HOOD.</b> 29 inches. The largest and most spectacular pure white Tulip among the late flowering varieties	.75	2.50	18.00
<b>MRS HENRY FORD.</b> 22 inches. Large flower of vivid orange-scarlet, with definite black mark at base. This beautiful Tulip resembles a Red Poppy, when it opens to full bloom. A 1950 Nelis introduction	.65	2.15	15.00
<b>PENELOPE.</b> 28 inches. Blendings of brown, buff, orange, yellow and salmon, with golden overtone. We consider this a very fine novelty	.65	2.15	15.00



Black Girl



King Mauve

# Prize Winning Tulips

	Per 3	Doz.	100
<b>PRICELESS.</b> 26 inches A tall white, edged with vivid red. Petals slightly pointed, a great improvement of the old variety Picotee .....	\$0.60	\$2.00	\$14.00
<b>SMILING QUEEN.</b> 32 inches. Considered a perfect American variety, in which size is very important, plus extra sturdiness in order to produce its exceptionally long flowers of clear rose-pink, as well as beautiful foliage .....	.85	2.85	21.00
<b>SOUTHERN CROSS.</b> 31 inches. A delightful blend of sulphur-yellow, changing to golden yellow, flushed warm apricot, inside golden yellow. Fine exhibition variety of unusual attraction. Late blooming .....	.50	1.75	12.00
<b>SPOTLIGHT.</b> 26 inches. Large, stately flower. Blend of peach, orange and golden olive-yellow. Base yellow with a faint blue halo. The variety is well named for it radiates at you and lingers in your memory .....	1.00	3.25	24.00
<b>SWEET HARMONY.</b> 26 inches. Oblong shaped flowers of clear lemon-yellow with an ivory-white border. A very unusual and pleasing novelty .....	1.95	6.50	.....
<b>THOMAS STEPHENSON.</b> 30 inches. A real giant of soft lavender which keeps its color exceptionally well. The flowers are cup-shaped, have blue base and black stamens .....	.60	1.95	13.50
<b>TORRENS.</b> 26 inches. An exceptionally large, scarlet-red show Tulip, very strong plant. Another example of good breeding by present-day hybridizers .....	.80	2.70	19.50
<b>ZOMERSCHOON.</b> 20 inches. An unusually lovely Tulip, soft salmon-pink flames on a silvery background. This noble variety, long thought lost, is at least 300 years old, records stating it was planted in the 17th Century. The only remaining variety dating back to the "Tulip Craze" in the Netherlands when fortunes were paid for a single Tulip bulb. A few bulbs have been found still in existence, and we can offer some to you now .....	.75	2.50	18.00

## NEW FRINGED TULIPS

Although the edges of the blossoms are finely lacerated these Tulips do not belong in the Parrot Tulips, since they retain their regular cup shape.

	Per 3	Doz.	100
<b>FRINGED LILAC.</b> 26 inches. A blending of lavender shades .....	\$0.75	\$2.50	\$18.00
<b>SOTHIS.</b> 26 inches. Vivid red, an outstanding variety .....	.50	1.55	10.50
<b>SUNDEW.</b> 25 inches. Cardinal-red .....	.40	1.40	9.50



Marie Nicholson

## COLLECTION

<b>3</b>	Each of the fringed Tulips at left ( 9 bulbs, labeled) .....	<b>\$1.60</b>
<b>6</b>	Each of the fringed Tulips at left (18 bulbs, labeled) .....	<b>2.95</b>
<b>12</b>	Each of the fringed Tulips at left (36 bulbs, labeled) .....	<b>5.30</b>



Montgomery

Mount Hood



# Nelis Giant May-



Orange Glow



American Flag



Bacchus

The modern Giant May-Flowering Tulip is the result of three separate experiments of Tulip breeding, formerly classified as Darwin, Cottage and Breeder Tulips. Through the inter-breeding of the three before-mentioned classes, the terms Darwin, Cottage (or Hybrid) and Breeder Tulips still listed in some catalogs have become so confusing that even among the best informed there are many clashes of opinion. Since the modern Giant May-Flowering Tulips contain the blood of all the three preceding crosses in proportions unknown to even the plant breeders themselves, it seems useless and scientifically meaningless. We, therefore, will list them as Giant May-Flowering Tulips. The term May-Flowering is based on our Michigan climate, and in southern locations the blooming period will, of course, be earlier. In revising our list for 1952 we have eliminated many varieties which we have considered to be surpassed by later introductions.

	Per 3	Doz.	100
<b>ADVANCE.</b> 28 inches. Glorious orange-scarlet Tulip of tremendous size. One of the earliest bloomers of this class .....	\$0.55	\$1.75	\$12.00
<b>AFTERGLOW.</b> 26 inches. Cup-shaped flower of clear dark salmon, edged light orange. This excellent variety makes a gorgeous effect if planted in masses with blue ground cover. ....	.45	1.40	9.50
<b>ALLBRIGHT.</b> 24 inches. An improved Bartigon variety of a more intense scarlet color. Ideal for outdoor planting as well as forcing. ....	.45	1.40	9.50
<b>AMERICAN FLAG.</b> 26 inches. Dark red with broad white lines and blue base. So named because the three colors resemble the American flag .....	.60	2.00	13.50
<b>ANNIE LAURIE.</b> 22 inches. Delicately soft pink with bright yellow stamens, related to the well known variety Clara Butt, but of a lighter shade. The color is best described as "Baby-pink" .....	.45	1.50	10.00
<b>ARISTOCRAT.</b> 32 inches. Carmine-rose with lighter edge. A Tulip whose strength and sturdiness are unsurpassed. A real giant among Tulips .....	.65	2.15	15.00
<b>AVALANCHE.</b> 28 inches. Best late pure white Tulip with pure white stamens. Flowers are large and cup-shaped, on a strong, erect stem. ....	.50	1.75	11.50
<b>BACCHUS.</b> 32 inches. Dark plum color with a large, egg-shaped flower. Beautiful garden variety with no superior .....	.50	1.75	11.50
<b>BARBARA PRATT.</b> 30 inches. Cochineal-carmine with lilac-rose edge. Very tall and sturdy plant with pleasing color combination .....	.45	1.40	9.50
<b>BELLE JAUNE.</b> 27 inches. Without question the finest and strongest dark yellow Tulip, of beautiful form, producing long, egg-shaped blossoms of enormous size .....	.45	1.50	9.75
<b>BLACK EAGLE.</b> 29 inches. Cup-shaped flower of great size and intense deep purple with deep blue base and black anthers. One of the richest and most brilliant intense deep purples, acquiring beautiful sheen when in full sun. Will produce flowers from a small size bulb .....	.50	1.75	11.50
<b>BLEU AIMABLE.</b> 26 inches. Blue-purple, changing to a charming blue as the flower ages. A very distinct and handsome Tulip. Late .....	.45	1.45	9.50
<b>CAROLINE TESTOUT.</b> 30 inches. One of the finest light pink Tulips, of perfect shape with a white base. Medium sized flowers with exceptional lasting qualities .....	.60	1.95	13.50
<b>CARRARA.</b> 28 inches. Flowers round and pure white as the marble from which it gets its name. A fine white .....	.45	1.45	9.50
<b>CHARLES NEEDHAM.</b> 27 inches. A magnificent variety, with tall, stiff stem, topped with a large, bright flower of brilliant, vivid red. Very attractive, of compelling beauty. ....	.50	1.70	11.50
<b>CITY OF HAARLEM.</b> 29 inches. Bright glittering scarlet with steel-blue base. One of the best scarlet Tulips for forcing or bedding .....	.50	1.70	11.50



# Flowering Tulips

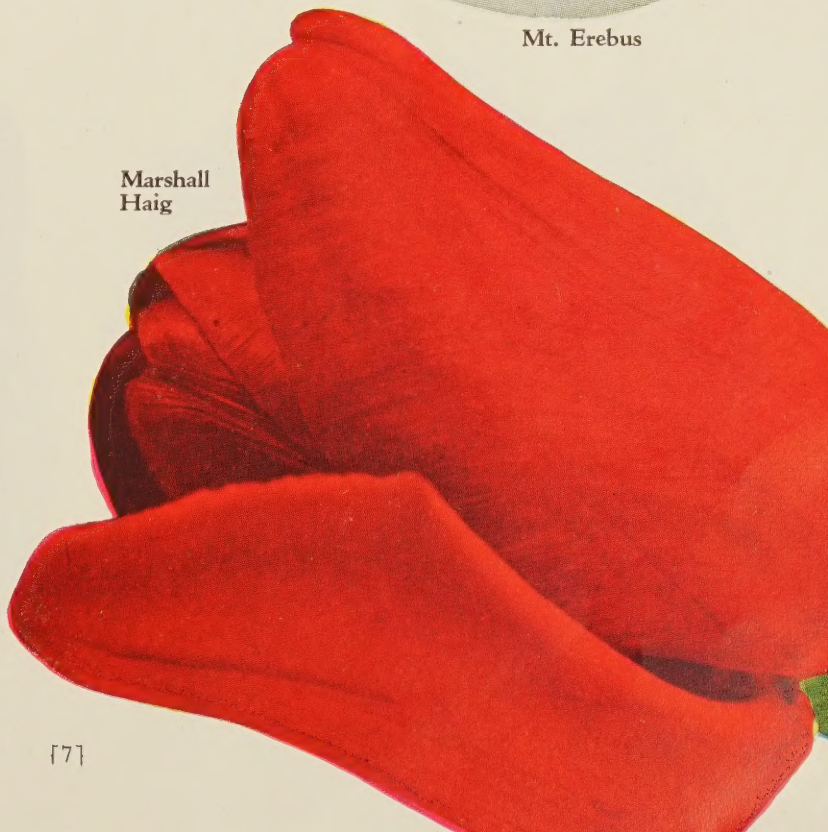
	Per 3	Doz.	100
<b>CONDE NAST.</b> 27 inches. A strong, sturdy, beautiful waxy yellow flower, which as it ages becomes suffused with a salmon overcast. A late blooming variety we are sure will please you .....	\$0.55	\$1.75	\$12.00
<b>CROWNING GLORY.</b> 24 inches. A golden yellow with a clearly defined edge of scarlet-red, making this a striking beauty, which is becoming quite a favorite .....	.45	1.50	10.00
<b>DARLINGTON.</b> 30 inches. An outstanding, large, rose-scarlet flower of cup-shape, with tips of the outer petals slightly reflexed. One of the finest .....	.50	1.70	11.50
<b>DEMETER.</b> 30 inches. A lovely, tall variety of purple with a warm reddish glow. Exceptionally early in this class of Tulips ...	.50	1.70	11.50
<b>DILLENBURG.</b> 28 inches. A new variety best described as a glorious salmon-orange, with large, showy, well formed flowers of great substance. Rather late bloomer .....	.45	1.45	9.50
<b>DON PEDRO.</b> 27 inches. A beautiful shade of coffee-brown, shaded maroon. A unique color; fragrant. Late .....	.50	1.70	11.50
<b>DORIE OVERALL.</b> 34 inches. The outside of this unusual flower is deep petunia-purple with lighter edge, while the inside is tinted light blue. Largest and tallest of this color and type .....	.60	1.95	13.50
<b>ECLIPSE.</b> 28 inches. The most perfect crimson-red Tulip in existence today. Glorious color, perfect shape and form without defects .....	.50	1.70	11.50
<b>FAUST.</b> 30 inches. Dark satiny purple with white base. Enormous flower of fine form, quite the best in its color. Highly recommended .....	.45	1.45	9.50
<b>GEORGE GRAPPE.</b> 29 inches. A new introduction of unusual merit. Large, well shaped flowers of a lovely lavender-blue with clear blue center carried on a tall, strong stem. Early to midseason bloomer .....	.50	1.70	11.50
<b>GLACIER.</b> 27 inches. Sometimes called "Wild-lust", this flower is of a beautiful ivory-white, giving an almost transparent effect .....	.50	1.70	11.50
<b>GOLDEN BRONZE.</b> 26 inches. This lovely Tulip is the exact color its name implies. One of the few really golden bronze varieties. Bulbs produce from 3 to 6 flowers per plant. Flowers of medium size .....	.45	1.45	9.50
<b>GOLDEN HARVEST.</b> 29 inches. Tall, deep lemon-yellow flower of great substance, with a lovely shading of pale green through the blossom, making it one of the rarest and loveliest of yellow Tulips .....	.45	1.45	9.50
<b>GRENADIER.</b> 21 inches. Dazzling vermilion-orange. Excellent in clumps in the border as outstanding bright spots in the color scheme. Recommended for a particularly showy effect. Most effective in full sun. Early bloomer ...	.50	1.70	11.50
<b>G. W. LEAK.</b> 28 inches. Brilliant flowers of geranium-scarlet of compelling beauty. The tips of the petals turn downward, showing the lovely pale base. This tall, strong variety is ideally suited for American climate; of breath-taking splendor .....	.50	1.70	11.50
<b>H. I. PRATT.</b> 27 inches. An egg-shaped flower of delicate lavender blendings, overlaid at the edge with veins of gold and set off with a narrow edge of golden yellow. The inside is more heavily overlaid, changing to golden yellow at the base .....	.50	1.70	11.50
<b>INDIAN CHIEF.</b> 36 inches. A very tall and strong Tulip of enormous size. The color is fascinating and very suitable for outdoor planting. Indian-brown flushed coppery brown, with a burnished metallic sheen. It towers above practically all other varieties. ...	.50	1.70	11.50
<b>INGA HUME.</b> 26 inches. Red with sharply broad, lined yellow edge; inside deep yellow, slightly sprayed red .....	.45	1.45	9.50



Crowning  
Glory



Mt. Erebus



Marshall  
Haig



Mrs. J. T. Scheepers

**NELIS GIANT MAY-FLOWERING TULIPS—  
Continued**

	Per 3	Doz.	100
<b>JEROEN BOSCH.</b> 28 inches. An unusual color combination of light maroon-red, with the edges of the petals bordered bronze, changing to golden yellow at the very edge. Oval shaped flower of large size .....	\$0.50	\$1.70	\$11.50
<b>JESSY.</b> 28 inches. An unusual flower of chestnut-brown with a warm, coppery red glow. Artistic coloring and good growing habits make this a favorite .....	.50	1.70	11.50
<b>KATHLEEN PARLOW.</b> 30 inches. Bright silvery rose, a very delicately colored blossom, carried on tall stem. Highly recommended for the garden. Slightly fragrant .....	.50	1.70	11.50
<b>KING LEAR.</b> 28 inches. A magnificent Tulip of darker red, fine rich mahogany with an orange overtone. Medium size flowers of vivid and unusual coloring .....	.50	1.70	11.50
<b>LADY HILLINGDON.</b> 27 inches. A delightful color of richly veined orange. White center of the petal has a salmon overcast. Inside has orange blendings with a deep orange-yellow base. Flowers carried on a wiry stem .....	.45	1.45	9.50

Mons. Mottet



	Per 3	Doz.	100
<b>LA TULIPE NOIRE.</b> 26 inches. The nearest approach to the so-called "Black Tulip", deep maroon-black with a velvety sheen. One of the darkest varieties .....	\$0.45	\$1.45	\$ 9.50
<b>MADAME BUTTERFLY.</b> 29 inches. An outstanding lavender Tulip. Strong, with a magnificent egg-shaped flower making a beautifully proportioned plant. The color is purple, changing to silvery lavender and gray .....	.45	1.45	9.50
<b>MARGEAUX.</b> 30 inches. An outstandingly lovely variety of unusual color. The gorgeous blossom is a rich wine-red, almost Dubonnet, carried on a tall stem, producing large size blossoms .....	.45	1.45	9.50
<b>MAKASSAR.</b> 26 inches. A beautiful, strong flower, of perfect golden yellow, equally well suited for outdoor planting as well as forcing .....	.50	1.70	11.50
<b>MARJORIE BOWEN.</b> 31 inches. A flower of very beautiful shape, of a color difficult to describe, it consists of buff, salmon and orange shades, which change to rose-pink as the flower ages. A beautiful and outstandingly graceful variety ....	.45	1.45	9.50
<b>MARSHALL HAIG.</b> 27 inches. A most unusual and beautiful Tulip of large size, which opens a bronzy red, edged crimson, and as the flower ages it becomes a brilliant crimson throughout, with a very bright interior and a golden yellow base. In our opinion the finest scarlet in its price class ...	.50	1.70	11.50
<b>MAZEPPA.</b> 28 inches. Brilliant geranium-scarlet. Long, oblong flowers with tips of petals slightly reflexed. This flower has an exceptional appeal in color, as well as in its excellent form .....	.45	1.50	10.00
<b>MONSIEUR MOTTET.</b> 26 inches. A light pink colored Tulip of medium size. Bulbs produce four to six flowers each. One of the best bunch flowering Tulips .....	.50	1.55	10.50
<b>MONTGOMERY.</b> 26 inches. A new color, imported directly from the producer of this new striking novelty of white, with a clearly marked red edge. This is a really striking flower which we know you will like .....	.70	2.25	16.50
<b>MOUNT EREBUS.</b> 29 inches. A spectacular new pure white Tulip, with white stamens. Strong and sturdy. One of the best in new whites, highly recommended .....	.50	1.70	11.50
<b>MRS. ETHEL TELLING.</b> 30 inches. (A Nelis introduction). A brilliant carmine-crimson, having a beautiful satiny sheen. Very large, oblong and imposing flower on a tall, strong stem. An outstanding variety which, once seen, is firmly fixed in your memory. Named in honor of Mrs. Ethel Telling, former chairman of the Holland, Michigan, Tulip Time Committee, for her untiring efforts in promoting and directing this great floral festival. ....	.70	2.25	16.00



The Bishop  
(See page 10)

NELIS GIANT MAY-FLOWERING TULIPS—  
Continued

	Per 3	Doz.	100
<b>MRS. J. T. SCHEEPERS.</b> 24 inches. One of the largest bright yellow Tulips, oval shaped flowers carried on straight stems. The petals will not turn back as flower ages, but remains cup-shaped to the end. Highly recommended .....	\$0.50	\$1.70	\$11.50
<b>MRS. MOON.</b> 26 inches. Beautiful, all yellow, vase-shaped flowers with pointed petals. Distinctly perfumed .....	.45	1.45	9.50
<b>MR. VAN ZYL.</b> 25 inches. A glorious dark rose Tulip with broad white border, lovely clear bright interior. A splendid variety which we can well recommend .....	.50	1.70	11.50
<b>NARDI.</b> 27 inches. Another new introduction of the giant flowering type, producing immense blooms of American-Beauty-red. A real flower marvel, with a disarming rosebud shape characteristic in its early stages .....	.45	1.45	9.50
<b>NEW ORLEANS.</b> 28 inches. A flower of intense claret-crimson with blue base. A strong, vivid color .....	.45	1.50	10.00
<b>NIPHETOS.</b> 27 inches. A gorgeous variety of soft sulphur-yellow; inside of bloom primula-yellow with yellow anthers. An excellent keeper .....	.50	1.70	11.50
<b>ORANGE GLOW.</b> 32 inches. A magnificent variety of golden yellow, overlaid with orange and buff, wiry, tall stem. The finest light orange Tulip we have ever seen, so far .....	.50	1.70	11.50
<b>OSSI OSWALDA.</b> 24 inches. A striking variety of creamy white, edged rose, resembling Picotee. This is a Chameleon type Tulip, changing by the day until at its height of bloom it is almost rose in color .....	.45	1.45	9.50
<b>PANORAMA.</b> 25 inches. Among the older varieties this Tulip has been able to hold its own. Its flower is beautiful coppery orange, with olive-green base. Has very long lasting qualities .....	.45	1.45	9.50
<b>PICOTEE.</b> (Lily-Flowering.) 20 inches. Snow-white with a margin of rose, pointed and reflexing petals. This is another old favorite which is still too good to be discarded .....	.45	1.50	10.00
<b>PRIDE OF ZWANENBURG.</b> 28 inches. A beautiful salmon-rose Tulip with a narrow edge of blush-rose at margin. Produces a wonderful, tall, salmon-pink bloom for which every connoisseur has been looking for years .....	.50	1.70	11.50
<b>PRINCESS ELIZABETH MAX.</b> 28 inches. Clear, deep pink, changing to rose-pink. The lovely, well shaped flower gives it added attraction. A larger, taller improvement over the older Princess Elizabeth variety .....	.45	1.45	9.50



Scarlet Emperor  
(See page 10)

	Per 3	Doz.	100
<b>PRUNUS.</b> 24 inches. An unusual color of salmon-pink, with lighter edge. This lovely variety is offered in place of the old variety Clara Butt ....	\$0.45	\$1.45	\$ 9.50
<b>QUEEN OF THE NIGHT.</b> 28 inches. Deep velvety maroon; seen from a distance it looks black; a tall, straight stem carries the large flower. Very showy .....	.45	1.45	9.50
<b>RIVIERA.</b> 30 inches. A tall variety with a large, cup-shaped flower of soft lilac. A very desirable Tulip, always greatly admired by our Tulip Time visitors .....	.50	1.55	10.50
<b>SCARLET BEAUTY.</b> 28 inches. Beautiful fiery scarlet without markings, one of the best reds for outside planting. Tall, straight stem with long lasting qualities of flowers .....	.50	1.70	11.50



Jessy



Margeaux

NELIS GIANT MAY-FLOWERING TULIPS—  
Continued

Per 3 Doz. 100

<b>SCARLET EMPEROR.</b> 26 inches. This brilliant Tulip has for the past twenty years been one of our most outstanding varieties. Regardless of weather conditions, it has, year after year, proved unsurpassed. Long, oval shaped flowers of vivid, lively scarlet, yellow base. The color is of such brilliance that it attracts attention from a great distance .....	\$0.50	\$1.70	\$11.50
<b>SILVERWING.</b> 29 inches. An unusual pure white variety, tall and strong, with white stamens. Blooms early among the tall blooming varieties and an excellent choice for those who desire an early, tall white .....	.50	1.55	10.50
<b>SONATE.</b> 29 inches. A blending of orange-red softening to a golden yellow at the edge, which was a spectacular success at our display field last year. You will find this variety blooms longer than the majority and will still be in fine shape when others are long gone .....	.50	1.70	11.50
<b>THE BISHOP.</b> 29 inches. The finest blue-purple Tulip in existence today. Strong, tall and never fails to make a fine showing .....	.55	1.85	12.75
<b>THE TORCH.</b> 22 inches. Scarlet flames on a yellow background, resembling a flaming torch. This globular Tulip with its unusual color combination is truly interesting and of striking beauty .....	.45	1.50	10.00
<b>TUBERGEN'S GLORY.</b> 26 inches. Large, pure salmon-pink blossoms with a white base feathered blue. A very good variety .....	.50	1.70	11.50
<b>WALLSTREET.</b> 30 inches. A recent addition in tall, lemon-yellow types, with yellow stamens. In our opinion it is far superior to the older "Yellow Giant" .....	.45	1.45	9.50
<b>WHITE GIANT.</b> 30 inches. A lovely white Darwin of correct Darwin shape, with a strong, straight, tall stem. Without question one of the best white Tulips. Black stamens .....	.45	1.50	10.00



The Torch



Annie Laurie  
(See page 6)

*New* **SUPER GIANT TULIP!**

**DARDANELLE.** 30 inches. This giant scarlet-red Tulip of immense size, great strength of stem and enormous blossoms, attracted considerable interest at our Tulip Exhibits at Holland, Michigan. We can now offer a limited number of these bulbs, from our stock. When these are sold, we can no longer accept any more orders for this year. Therefore, if you wish to try this variety, be sure to place your order early. **3 for \$1.50; \$5.25 per doz.**



*Mixed*

**REMBRANDT TULIPS**

Rembrandt Tulips are striped and feathered Darwin Tulips, with stripes or flakes of white, lavender, red, yellow, or other hues, as their colors. They blend in perfect harmony at all times. They are especially nice when used for cut flowers. The mixture we supply is our own, and we are proud to offer it. Contains all colors, all striped, and is offered as such only. **\$1.75 per doz; 25 for \$3.25; 100 for \$12.00.**

# *Nelis* MOST POPULAR COLLECTION

<b>3 Each</b>	of 10 varieties ( 30 bulbs, labeled) .....	<b>\$ 4.50</b>
<b>6 Each</b>	of 10 varieties ( 60 bulbs, labeled) .....	<b>8.25</b>
<b>12 Each</b>	of 10 varieties ( 120 bulbs, labeled) .....	<b>14.85</b>
<b>25 Each</b>	of 10 varieties ( 250 bulbs, labeled) .....	<b>25.65</b>
<b>100 Each</b>	of 10 varieties (1000 bulbs, labeled) .....	<b>98.00</b>

## Not illustrated:

Crowning Glory. Yellow, red edge.  
 Chas. Needham. Vivid red.  
 La Tulipe Noire. Black.  
 Margeaux. Wine-red.



A

B

C

D

E

F

- A Dillenburg
- B Wallstreet
- C White Giant
- D George Grappe
- E Prunus
- F Eclipse

This collection has been compiled from orders placed at our Display Fields by our Tulip Time visitors, as the most outstanding and popular varieties. This collection will give you a lovely range of color. We have not tried to see if we could beat competition, but rather to give you outstanding varieties for your utmost enjoyment.

# New and Splendid Triumph Tulips

## GIANT FLOWERS OF MAJESTIC SPLENDOR

This new race, which blooms about eight days earlier than the Darwin type, is becoming better known every year, and during our annual Tulip Show more and more people are becoming interested in it. The average height is shorter than the Darwins, but they are of extremely sturdy growth, and therefore are excellent for bedding purposes. The varieties we are listing here are among the latest.

	Per 3	Doz.	100
<b>ALBERIO.</b> 24 inches. Warm shade of deep wine-red with a narrow edge of flesh-pink. Very large and sturdy . . .	\$0.45	\$1.45	\$ 9.50
<b>BLIZZARD.</b> 24 inches. This outstanding white Triumph Tulip had its first showing in our 1948 Tulip Display when it exceeded all other whites in this class by such a margin that there was no comparison. This variety has remained scarce and the demand is still rising . . . . .	1.60	5.25	....
<b>EDITH EDDY.</b> 18 inches. Beautiful carmine-red edged white. Of fine shape and form, excellent for bedding. . .	.45	1.45	9.50



Gladstone



Mme. de Pompadour



Ursa Minor

	Per 3	Doz.	100
<b>ELIZABETH EVERS.</b> 24 inches. A tremendously large flower of fuchsia-red, flushed with line of silver and white with white base. Very strong grower, and the flowers are long lasting . . . . .	\$0.50	\$1.75	\$11.50
<b>ELMUS.</b> 24 inches. Cherry-red with a narrow creamy white edge around the petals. Extra large flower. A great European favorite . . . . .	.50	1.75	11.50
<b>GLADSTONE.</b> 26 inches. Extra large flower of clear purple. A most outstanding color in this class of Tulips, which makes an unforgettable showing when planted with golden yellow flowers, such as Ursa Minor . . . . .	.60	1.95	13.50
<b>JACOBI.</b> 18 inches. Dark red, of exceptionally uniform size and color. An ideal flower for outdoor plantings and bedding . . . . .	.65	2.15	15.00
<b>JOHANNA.</b> 22 inches. Light salmon-rose, inside salmon-rose to vermilion with base of canary-yellow. Large flower poised on a tall stem. If you like a salmon-pink Tulip we can well recommend this variety. . . . .	.45	1.45	9.50
<b>KANSAS.</b> 22 inches. Snow-white with lemon-yellow base and yellow stamens, growing to a medium height. This is one of the best white Tulips for outdoor planting . . . . .	.45	1.45	9.50
<b>MADAME DE POMPADOUR.</b> 26 inches. Large, oblong flower of lilac and red stripes on a white background with the inside of the flower flamed. A very showy and lovely variety . . . . .	.50	1.75	11.50
<b>MODOC.</b> 28 inches. A pleasing lavender flower, which is deeper in color towards the center of the petals, light base, black stamens. Truly a nice variety which is well shaped . . . . .	.90	3.00	22.50
<b>PANDION.</b> 24 inches. Large flower of soft lavender, which blends to a pale lavender at the edges. A flower which for the past few years attracted much attention during our Tulip Festival and is now available for listing in our catalog . . . . .	1.00	3.25	24.00
<b>PRES. VON HINDENBURG.</b> 24 inches. Purplish garnet-red with yellow edge. Large, strong flower which lasts a long time. Highly recommended . . . . .	.50	1.55	10.50
<b>RHINELAND.</b> 22 inches. Oblong flower with slightly reflexing petals of scarlet, with a distinct yellow edge. . . . .	.45	1.45	9.50
<b>ROSE BEAUTY.</b> 20 inches. A lovely rose colored Tulip with an almost white border. Cup-shaped flower of medium size . . . . .	.45	1.45	9.50
<b>SCARLET SENSATION.</b> 15 inches. Outstanding, luminous vermilion-red. A fine variety for showy flower beds . . . . .	.45	1.45	9.50
<b>SPRINGTIME.</b> 24 inches. A sturdy flower of extraordinary beauty, which attains a height of 2 feet. The center of the petals is creamy white, bordered with a lively cherry-rose, making a very distinct contrast. One of our finest . . . . .	.50	1.55	10.50
<b>URSA MINOR.</b> 22 inches. Deep golden yellow, an exceptional bedding variety. The finest golden yellow in this class. Highly recommended . . . . .	.45	1.50	10.00

### GIANT TRIUMPH TULIP COLLECTION

- |                                   |                                |
|-----------------------------------|--------------------------------|
| Alberio. Wine-red.                | Kansas. White.                 |
| Edith Eddy. Carmine, edged white. | Rose Beauty. Rose.             |
| Johanna. Salmon-rose.             | Scarlet Sensation. Red.        |
|                                   | Springtime. White, edged rose. |
| Ursa Minor. Yellow.               |                                |

3 EACH of the 8 varieties ( 24 bulbs, labeled) . . .	\$ 3.45
6 EACH of the 8 varieties ( 48 bulbs, labeled) . . .	6.00
12 EACH of the 8 varieties ( 96 bulbs, labeled) . . .	11.00
25 EACH of the 8 varieties (200 bulbs, labeled) . . .	20.00
100 EACH of the 8 varieties (800 bulbs, labeled) . . .	75.00

# Lily-Flowered Tulips

MAY-FLOWERING

This very beautiful race of Tulips, with reflexing petals, greatly resemble colored Lilies. They are unusual and different and highly recommended.

	Per 3	Doz.	100
<b>ALASKA.</b> 24 inches. Exquisite, long, pure yellow flower, reflexed petals. Prize winner. A valuable addition to any collection .....	\$0.45	\$1.50	\$10.00
<b>BEVERLY.</b> 25 inches. Brilliant carmine-rose with white base. A gay and cheerful variety for the garden and for cutting .....	.55	1.75	12.00
<b>CAPTAIN FRYATT.</b> 24 inches. Dark wine-red with a purplish blue center. The only Tulip in this color in the Lily-Flowered type. Highly recommended ....	.60	1.90	13.50
<b>STANISLAUS.</b> 13 inches. Lovely flowers of very bright and glittering orange of the true Lily-Flowering type. A Tulip of delicate beauty .....	.55	1.75	12.00
<b>WHITE CROSS.</b> 20 inches. Pure white variety of sturdy growth. The outer petals have a greenish tinge before the bloom is fully developed, and are much recurved. A lovely variety .....	.50	1.70	11.50

## DOUBLE EARLY

	Per 3	Doz.	100
<b>*MR. VAN DER HOEF.</b> 12 inches. Pure golden yellow, sport of Murillo .....	\$0.50	\$1.65	\$11.00
<b>*ORANGE NASSAU.</b> 12 inches. Brilliant orange-red, a rather unusual color in double Tulips .....	.50	1.65	11.00
<b>*PEACH BLOSSOM.</b> 12 inches. Brilliant dark rose-pink. Large flower. Recommended .....	.50	1.65	11.00
<b>*SCHOONOORD.</b> 12 inches. Beautiful pure white, large and very full flower .....	.50	1.65	11.00
<b>*TITIAN.</b> 12 inches. Beautiful clear red, an extra fine full double .....	.50	1.65	11.00

\*May be forced.

## Outstanding New Novelties in Lily-Flowered Tulips

Tulip breeders have made remarkable improvements in Tulip breeding in this particular type. We were greatly impressed with the varieties listed below when tested in our trial grounds, and can recommend them unreservedly. Try these, you will be greatly pleased.

	Per 3	Doz.	100
<b>ARTISTE.</b> 18 inches. A novelty of unusual interest, and artistic coloring. The outside of the petals is of a warm rust shade, veined with cream, green and dubonnet, while the inside is paler and blends in perfect harmony shades of chartreuse, peach and salmon .....	\$1.40	\$4.75	....
<b>BOHEMIAN GIRL.</b> 23 inches. A very pleasing lavender Lily-flower, a very attractive variety and a new color in the Lily-Flowering class .....	.75	2.50	....
<b>DON JOSE.</b> 27 inches. One of the tallest and largest Lily-Flowering Tulips with an extra long blooming period. Brilliant scarlet-red with a pronounced yellow base and yellow stamens .....	.75	2.50	18.00
<b>GISELA.</b> 26 inches. The most beautiful and graceful of all the new Lily Tulips. The flower is over 7 inches in length and of extraordinarily strong texture. This new variety is bound to be a revelation to Tulip lovers .....	.80	2.70	19.50
<b>GOLDEN DUCHESS.</b> 26 inches. A strong plant, producing deep golden yellow blooms, with deep yellow base and golden stamens .....	.65	2.15	15.00
<b>LILAC TIMES.</b> 27 inches. A deep and strong purple. Inside white base with yellow pistils. The first time we are able to list a deep purple in the Lily-Flowering class. Try it, it's very unusual .....	1.10	3.75	....
<b>SCARLET FLAME.</b> 26 inches. Outside a beautiful cherry-pink; center of petals have ivory markings; inside vivid salmon with a well defined yellow base. Another of the new Giant Lily Tulips having blossoms nearly 6 inches in length .....	1.10	3.65	....



Golden Duchess



Artiste

## LILY-FLOWERED TULIP COLLECTION

Alaska Beverly Stanislaus White Cross

<b>3 Each</b> of the 4 varieties ( 12 bulbs labeled)	<b>\$1.95</b>
<b>6 Each</b> of the 4 varieties ( 24 bulbs, labeled)	<b>3.50</b>
<b>12 Each</b> of the 4 varieties ( 48 bulbs, labeled)	<b>6.50</b>
<b>25 Each</b> of the 4 varieties (100 bulbs, labeled)	<b>12.00</b>

## Early Tulips

### SINGLE

For April Flowers in Your Garden

	Per 3	Doz.	100
<b>*BRILLIANT STAR.</b> 12 inches. A vivid flower of brilliant scarlet with black center. A large blossom on erect stem .....	\$0.60	\$1.90	\$13.50
<b>*GENERAL DE WET.</b> 12 inches. Sweet scented flower of fiery orange .....	.45	1.50	10.00
<b>*IBIS.</b> 12 inches. Lovely variety of splendid deep rose .....	.45	1.50	10.00
<b>*KEIZERSKROON.</b> 12 inches. Bright red, broad yellow border, very effective .....	.65	2.15	15.00
<b>*OLYMPIADE.</b> 12 inches. Pure golden yellow, very large flower .....	.45	1.50	10.00
<b>*PRINCE CARNIVAL.</b> 12 inches. Clear scarlet flames on golden yellow background .....	.65	2.15	15.00
<b>*SUNBURST.</b> 12 inches. Vivid yellow, flushed scarlet .....	.45	1.50	10.00
<b>*WHITE HAWK.</b> 12 inches. Pure white, with a very large flower of great substance and long lasting qualities .....	.45	1.50	10.00

\*May be forced.

# Botanical Tulips

These wild Tulips come in lovely odd shapes, many with reflexed petals and curiously twisted and reflexed foliage. They belong in the rock garden where they thrive and increase if left in the ground from year to year. Plant them in groups of six to twelve bulbs among the rocks in fairly well drained pockets. We have eliminated all varieties of inferior and poor blooming qualities, and only those varieties that have given satisfaction under American conditions have been listed.

	Per 3	Doz.	100
<b>BATALINI.</b> 6 inches. Sulphur-yellow form of Tulipa Linifolia .....	\$0.80	\$2.65	\$19.00
<b>CRYSANTHA.</b> 8 inches. The smallest species in existence; a real novelty. Color rich yellow with rose exterior .....	1.15	8.00	
<b>CLUSIANA</b> (Little Lady Tulip). 7 inches. Outer petals cherry-red, inner petals white with deep blue base. This variety has been off the market for a number of years, and we are pleased to be able to offer it again. ....	1.15	8.00	
<b>CORNUTA STENOPETALA.</b> 15 inches. Graciously formed flowers of scarlet and gold. The long, narrow and twisted petals give an effect which is not seen in any other Tulip. Held upright on a tall, stiff stem; it is a most interesting species, having a long blooming season .....	.60	2.00	14.00
<b>DASYSTEMON.</b> 6 inches. Incredibly lovely flower of canary-yellow, petals tipped pure white with flowers opening flat. Foliage is glossy green. Excellent showy species .....	.50	1.65	12.00
<b>EICHLERI.</b> 10 inches. Crimson-scarlet, shaded orange, with glittering black center marked with gold. Very large flower. This variety will outshine a great many of our cultivated Tulips. Native of Turkestan. Highly recommended .....	.40	1.35	9.00
<b>KAUFMANNIANA, THE FIRST.</b> 7 inches. Another new form, color rose to white, base yellow; outside carmine-red edged white. Large and earliest of the Botanical varieties .....	.75	2.50	18.00
<b>LINIFOLIA.</b> (True.) 6 inches. Light vermilion-red. Extra and most unusual variety for the rock garden. Exquisite, and extremely scarce .....	.60	2.00	14.00
<b>MARJOLETTI.</b> 14 inches. Soft primrose with a carmine-red border. The flower held on strong, straight stem. Native of Savoy, blooms the second week in May ...	.40	1.35	9.00
<b>PRAESTANS, FUSILIER.</b> 8 inches. Largest of the Praestans type. Flowers bright vermilion-red, producing 4 to 5 flowers per plant at one time .....	.90	3.10	23.00
<b>VIRIDIFLORA PRAECOX.</b> 10 inches. Light green, bordered with an edge of light yellow, a rare and unusual color. This variety is very scarce .....	1.50	5.00	.....



Clusiana



Praestans, Fusilier

Dasystemon



Cornuta Stenopetala



Kaufmanniana

## BOTANICAL TULIP COLLECTION

DASYSTEMON  
EICHLERI

LINIFOLIA  
MARJOLETTI

<b>6 Each</b>	of 4 varieties ( 24 bulbs, labeled) ..	<b>\$3.25</b>
<b>12 Each</b>	of 4 varieties ( 48 bulbs, labeled) ..	<b>6.25</b>
<b>25 Each</b>	of 4 varieties (100 bulbs, labeled) ..	<b>12.25</b>

Eichleri



Marjoletti



Chrysantha





# Novelty PARROT TULIPS

Here is a complete list of the most outstanding novelties in Parrot Tulips. These new Parrots, in contrast with the older varieties, all have heavy, firm stems to keep the flowers erect and are a valuable addition to any garden. These new types, strange to say, have all sported from the most popular varieties long known to the flower lover. Most everyone has admired Parrot Tulip Fantasy, which is by far the best known of this new type, and which has sported from the well known Darwin Tulip, Clara Butt. They are so entirely different from all the other flowers that they provoke the startled admiration of all who see them, and are now available at greatly reduced prices.

	Per 3	Doz.	100
<b>BLUE PARROT.</b> 26 inches. A glorious flower of bright violet, shading to steel-blue. As the blossom opens it gradually changes to a most pleasing blue. Very large flower with strong stem. Sport and color of Darwin Tulip, Bleu Aimable .....	\$0.45	\$1.45	\$ 9.50
<b>FANTASY.</b> 22 inches. Beautiful salmon-pink with a much darker interior, outside marked with emerald-green. This variety has made a remarkable hit. Sport and color of Darwin Tulip, Clara Butt .....	.45	1.45	9.50
<b>FARADAY.</b> 22 inches. A truly outstanding and very different Parrot. Its delicate creamy petals bear veins of red and green. The supply is still short, please order early to assure delivery ..	1.95	6.50	.....
<b>FIREBIRD.</b> 22 inches. An appealing new addition to the Parrot class, of penetrating red, with the center of the beautifully ruffled petals marked green on the outside. Also produced through X-Ray by Dr. de Mol from Fantasy .....	.50	1.70	11.50
<b>GADELAN.</b> 22 inches. Violet and mauve, with purple shading, center white. A magnificent variety of gigantic size and excellent substance. Sport and color of Darwin Tulip, Sensation. Highly recommended .....	.70	2.30	16.50
<b>MISS KAY.</b> 27 inches. Gorgeous recent addition to the Parrot listing with a large, exquisite bloom of dark crimson-maroon. Sport and color of Darwin Tulip, Allard Pierson .....	.50	1.70	11.50
<b>OPAL QUEEN.</b> 26 inches. Very beautiful pearl-blue Parrot of remarkable size, carried on a strong stem. Sport and color of Darwin Tulip, Glory of Walworth. Highly recommended .....	.60	1.95	13.50
<b>ORANGE FAVORITE.</b> 22 inches. After many years we are happy to offer an orange Parrot Tulip, and this elegant variety is attractively frilled with petals marked with green on the outside in lovely contrast. Sport of the well known variety Orange King, and one of the most fragrant Tulips known .....	.50	1.70	11.50
<b>PINK CHAMPION.</b> 20 inches. Extra large white blossoms which are bordered with a pink margin. A very unusual and pleasing color combination .....	.80	2.70	19.50
<b>RED CHAMPION.</b> 24 inches. Huge flower of bright crimson with slight shading of rosy red. Flowers are carried on a strong and stiff stem. Sport and color of Darwin Tulip, Bartigon .....	.60	1.95	13.50
<b>SUNSHINE.</b> 22 inches. Lovely Parrot of pure golden yellow, which is of true Parrot type. Very showy, but especially effective in combination with other varieties .....	.55	1.75	12.00
<b>THERESE.</b> 29 inches. Brilliant scarlet, inside glittering scarlet of a lighter shade, white center, bordered blue, producing a tremendously large flower. Sport and color of Darwin Tulip, Farncombe Sanders. Highly recommended .....	.50	1.70	11.50
<b>TEXAS GOLD.</b> 24 inches. By far the largest and most grandiose of all the yellows, if not of all Parrots. The huge yellow flowers are bordered with a narrow edge of vivid red, which enhances the flower still more. For size and beauty we have never seen its equal .....	1.60	5.25	.....



Orange Favorite



Fantasy



Faraday



Therese

## COLLECTION OF NOVELTY PARROT TULIPS

BLUE PARROT  
FANTASY

ORANGE FAVORITE  
THERESE

3 EACH of 4 varieties ( 12 bulbs, separately labeled) .....	\$1.85
6 EACH of 4 varieties ( 24 bulbs, separately labeled) .....	3.30
12 EACH of 4 varieties ( 48 bulbs, separately labeled) .....	6.15
25 EACH of 4 varieties (100 bulbs) separately labeled) .....	11.75

# Late Flowering DOU

These double varieties are extremely showy, with flowers as large as Peonies, and come in a magnificent range of colors. They have created a remarkable interest, and in the past, nearly all the available supply has been bought by our "Tulip Time" visitors, who were able to see them in bloom. As real novelties, we are proud to recommend them for exhibition or show purposes. Of latest introduction, the quantity of bulbs is limited and early orders are most apt to insure delivery.

Per 3 Doz. 100

<b>AVONDZON.</b> (Setting Sun.) 20 inches. A delicate soft orange, changing to salmon with gold at edge, inside deep orange resembling the setting sun. A beautiful, outstanding variety which is highly recommended .....	\$0.60	\$2.00	\$14.00
<b>BALTIMORE.</b> 24 inches. Dark amaranth-red, base inside dark blue with green reflection. Very large and showy Tulip ....	.60	1.95	13.50
<b>BLUE FLAG.</b> 22 inches. Lovely lavender-blue flower carried on a strong and sturdy stem. Although an old variety, it is much admired each year by our "Tulip Time" visitors. Flowers are of extremely large size and unusually attractive.	.90	3.00	.....
<b>CLARA GARDEN.</b> 22 inches. A new Peony Tulip flower of vivid rose color, which, when better known, will become as outstanding as the other varieties listed on this page ....	.80	2.60	18.00
<b>DELADIER.</b> 20 inches. Deep carmine-rose, with lighter edge. Very sturdy growth with strong, stiff stems, and a very pleasing color .....	.60	1.95	13.50
<b>DOUBLE No. 99.</b> 17 inches. A new double scarlet-red seedling, which was not yet named by the originator, we liked it very much and are listing it for the first time ....	.75	2.50	.....
<b>DOUBLE PRUNUS.</b> 24 inches. First offered during our 1949 show, this very fine variety was greatly admired by thousands of our visitors. Very double rose-pink color. Strong and sturdy .....	.50	1.65	11.00
<b>EDITH HELEN.</b> 22 inches. A new color in the Giant Peony Tulips, a soft lavender-pink, a most pleasing color .....	.70	2.25	16.00
<b>EROS.</b> 20 inches. A superbly beautiful double Tulip of salmon-pink. Highly recommended .....	.80	2.60	18.00
<b>LORD DERBY.</b> 22 inches. American-Beauty-red with distinct white edge. This newer variety is extremely double .....	.60	2.00	14.00
<b>MARKATTO.</b> 22 inches. Dark maroon-red flower, each petal bordered orange-yellow. Very large and double blooms on strong stems .....	.80	2.60	18.00
<b>MOUNT TACOMA.</b> 22 inches. Extra large flowers of purest white, with emerald-green marking on outer petals. Very strong and sturdy with long blooming season. Scarce .....	.55	1.75	12.00



Eros



Markatto



Symphonia



# DOUBLE GIANT TULIPS

	Per 3	Doz.	100
<b>NIZZA.</b> 20 inches. A spectacular variety of dominant beauty with a large double flower of creamy white striped vivid red .....	\$0.70	\$2.30	\$16.50
<b>OZON.</b> 20 inches. A radiant cardinal-red, with an edge of orange-yellow around each petal, the bases of which are golden yellow. Showy and strong variety. ....	.60	2.00	14.00
<b>PICOTEE.</b> 18 inches. Flowers open white with a margin of pink suffusing the whole flower as it ages; one of the loveliest varieties we grow. Flowers become as large as a full grown Peony .....	.75	2.50	18.00
<b>ROCKET.</b> 20 inches. A lovely new double, of same form and habit as Eros, but of a clear red color. Unusual and scarce .....	.65	2.15	15.00
<b>ROYAL YELLOW.</b> 18 inches. The finest double yellow ever introduced, of a lovely clear yellow color, exquisitely formed blossom. A poem of symmetrical perfection .....	.65	2.15	15.00
<b>SYMPHONIA.</b> 26 inches. Gorgeous, tall, Peony-like bloom of brilliant American-Beauty-red with a sweet scented fragrance. A variety which you will enjoy and admire. A great favorite with the writer. ....	.55	1.75	12.00
<b>UNCLE TOM.</b> 22 inches. An especially extra double producing fine shaped flowers of a warm, dark maroon. A variety we can well recommend .....	.75	2.50	18.00
<b>VALONA.</b> 18 inches. Deep scarlet, edged rose. An immense flower, offered for the first time direct from originator last year. Spectacular example of size and fullness of the new Peony type Tulips. ....	\$1.00 each;	2.50	.....



Lord Derby



Avondzon

## COLLECTION OF DOUBLE GIANT TULIPS

Avondzon. Soft orange.	Symphonia. American-Beauty-red.	
Mount Tacoma. White.	Deladier. Soft pink.	
Double Prunus. Rose-pink.	Uncle Tom. Maroon.	
<b>3</b> EACH of above separately labeled) .....	<b>6</b> varieties ( 18 bulbs, .....	<b>\$3.50</b>
<b>6</b> EACH of above separately labeled) .....	<b>6</b> varieties ( 36 bulbs, .....	<b>6.25</b>
<b>12</b> EACH of above separately labeled) .....	<b>6</b> varieties ( 72 bulbs, .....	<b>11.50</b>
<b>25</b> EACH of above separately labeled) .....	<b>6</b> varieties (150 bulbs, .....	<b>21.50</b>



Uncle Tom



Mount Tacoma

We have watched with great interest the beautiful new Iris produced by outstanding hybridizers during the past decade, and were so fascinated by them that we selected the following varieties to offer to our customers.

Each one of the varieties offered has great merit and if you have not planted any of these beautiful varieties we urge you to try them. They are easy to grow and are a credit to any up-to-date garden.

Shipment of Iris starts August 15th.

	Each	Per 3
<b>ANITRA.</b> As blue as the sky on a bright summer day. The large flowers are beautifully fashioned . . . . .	\$0.50	\$1.30
<b>ARCTIC.</b> A huge white and gold flower with ruffled standards and broad falls. Golden beard . . . . .	.50	1.30
<b>BALROUDOUR.</b> Exotic in form and color. Cream standards flecked with purple, and chartreuse falls with a purple blotch. When worn on an evening gown it is frequently mistaken for an Orchid. The blossoms are supported on 12-inch stalks . . .	.50	1.25
<b>BLUE RHYTHM.</b> Large, well formed flowers of cornflower-blue. One of the very best. This Iris is number one on the 1952 list for the 100 best Iris . . . . .	1.75	5.00



Blue Rhythm



City of Lincoln

	Each	Per 3
<b>BLUE SHIMMER.</b> The huge flowers are clear white, edged with blue. A universal favorite . . . . .	\$1.00	\$2.75
<b>BUFFAWN.</b> Its name describes it, buff and fawn with a dash of pink. Delicate coloring of serene beauty . . . . .	.50	1.30
<b>CHINA MAID.</b> An immense blend of soft mallow-pink, gold and lilac. Very attractive . . . . .	.75	2.00
<b>CITY OF LINCOLN.</b> Rich yellow standards, falls bright chestnut-red, edged with gold . . . . .	.50	1.30
<b>COPPER PINK.</b> Beautiful soft pink flushed sparkling copper. Blue shading on the midrib and an orange-brown beard complete this lovely Iris . . . . .	.50	1.30
<b>ELMOHR.</b> A glossy mulberry-red of immense size. One of the largest and finest Iris . . . . .	1.00	2.75
<b>FRANK ADAMS.</b> A vigorous, flamboyant, tall blend of fawn, tan and pink. Sparkling colors . . . . .	.50	1.30
<b>GOLDEN TREASURE.</b> An exquisite creamy yellow with rich golden orange in the center of the flower. Of excellent substance. . . . .	.50	1.30
<b>GREAT LAKES.</b> A clear blue. One of the highest rated Iris. Huge, perfectly shaped blossoms . . . . .	.75	2.00

# Garden Iris



Ranger

	Each	Per 3
<b>NASSAK.</b> A spectacular white. Falls and standards are neatly stitched with blue .....	\$0.50	\$1.30
<b>OLA KALA.</b> A graceful ruffled flower of brightest deep yellow, burnished with gold .....	1.00	2.75
<b>PERSIAN PRINCE.</b> Standards of bright yellow; falls flaring and solid maroon-brown. A variegata of the City of Lincoln type .....	.50	1.30
<b>PIKES PEAK PINK.</b> A delicate seashell-pink .....	1.00	2.75
<b>PRAIRIE SUNSET.</b> Possesses the glowing colors of the setting sun .....	1.00	2.75
<b>RADIANT.</b> One of the most brilliant varieties. Glowing bronze standards and red falls .....	.50	1.30
<b>RANGER.</b> Beautiful red-mahogany tint with orange beard .....	1.50	4.25
<b>SABLE.</b> A rich velvety black-purple which is always a best seller .....	1.00	2.75
<b>SHINING WATERS.</b> A graceful, clear medium blue .....	.50	1.30
<b>SIR KNIGHT.</b> A large blue-purple with a silky finish .....	.50	1.30
<b>THE RED DOUGLAS.</b> A rich red-purple with substance that resembles velvet .....	.75	2.00

	Each	Per 3
<b>HEROIQUE.</b> A huge white, perhaps the largest Iris in the world. Flowers 9 inches and more across. Sturdy stalks. Everyone who sees it in bloom wants it. The supply is still short .....	\$3.00	....
<b>INDIAN HILLS.</b> A tall, true purple. An Iris that should be in every garden, as it makes a very striking show .....	.50	1.30
<b>LADY MOHR.</b> Oyster-shell-white standards and chartreuse falls. The buds appear to be fashioned of burnished copper .....	1.00	2.75
<b>MAID OF ASTOLAT.</b> A huge porcelain-white, beautifully trimmed with blue. ....	.50	1.30
<b>MME. L. AUREAU.</b> Silvery white flowers which are heavily peppered with heliotrope .....	.50	1.30

## Collection

### OF NEW GARDEN IRIS

BALROUDOUR	OLA KALA	
BLUE SHIMMER	PIKES PEAK PINK	
CITY OF LINCOLN	RANGER	
<b>1 Each</b>	of 6 varieties (not labeled)	<b>\$ 5.15</b>
	(6 plants)	
<b>3 Each</b>	of 6 varieties (labeled)	<b>14.00</b>
	(18 plants)	



Pikes Peak Pink

# Narcissus or



Mrs. R. O. Backhouse

To inform you of the correct blooming time of the different varieties, we have used the following letters:

"E" for Early. "ME" for Medium Early. "M" for Medium. "ML" for Medium Late. "L" for Late.

In order to have a beautiful bulb garden, Narcissi should be planted freely. They thrive in practically any climate in the United States, and are not only excellent for outdoors, but millions are used every year for forcing indoors. Their graceful form, exquisitely shaped cups and trumpets, and long, straight stems have made them favorites for cut-flower purposes with every American gardener. We have added many new varieties to the old favorites. For a real revelation, you should try some of the new types. They are really exquisite.

The Botanical terms: Incomparabilis, Leedsi and Barri, formerly used to classify Narcissi, have been discontinued, because, through the cross-breeding of the different varieties, it is now almost impossible to judge which Narcissi belong in which classification. The nine new classifications listed below will be easier to understand:

- (1) Trumpet Narcissi: trumpet as long or longer than perianth segments. May be self-colored or bi-colored.
- (2) Long-Cupped Narcissi.
- (3) Short-Cupped Narcissi.
- (4) Double Narcissi.
- (5) Triandrus Narcissi: three or more bell-shaped flowers per stem.
- (6) Jonquil Narcissi: three or more small flowers per stem. Flowers but-tercup-yellow, and very fragrant. Long rushlike foliage.
- (7) Poetaz Narcissi: cluster-flowering type, with 6 to 12 flowers per stem.
- (8) Poeticus Narcissi: having white perianth with red eye. Always fragrant.
- (9) Species and wild forms.

	Per 3	Doz.	100
<b>ACTEA.</b> (Poeticus.) Pure white perianth, cup yellow, edged red. We consider this the best of the common Poeticus varieties. Fragrant. M. ....	\$0.50	\$1.55	\$10.50
<b>BEERSHEBA.</b> (Trumpet.) Perianth and trumpet of magnificent proportions. Sturdy foliage and stem. Height 20 to 22 inches. The color is pure white and expressive of purity in the highest sense. Those who are forming collections of the finest Narcissi rate Beersheba at the top of the large white trumpets. Received an Award of Merit and a First Class Certificate. M. ....	1.40	4.60	35.00
<b>BENOY LOVEJOY.</b> (Short-Cupped.) Perianth cream-white with frilled and fluted yellow cup stained deep orange at its edge. A good hardy grower which forms nice clumps in a short time. Recommended. M. ....	.70	2.25	16.00
<b>BRIDESMAID.</b> (Long-Cupped.) Pure white, large perianth, with a very large, fully ruffled cup, dislike and delicately shaded cream, edged soft apricot. A flower of appealing beauty. We like it. M. ....	1.00	3.25	24.00
<b>BUSTEIN HUETT.</b> (Short-Cupped.) Large, cream-yellow perianth of broad, overlapping petals, with a flaring and fringed cup of red, broadly edged scarlet, changing to orange in the throat. A real red cup. ME. ....	.60	2.00	14.00



New Yellow Cheerfulness (See page 21)



Geranium

# Daffodils

	Per 3	Doz.	100
<b>CARLTON.</b> (Long-Cupped.) A handsome variety that is destined to become very popular when widely known. Broad, overlapping perianth with a large expanded cup frilled at the brim, the entire flower of a uniformly soft yellow. A magnificent plant of great vigor, very free blooming, early and of long lasting quality. Excellent for exhibition. This variety received an Award of Merit. E. . . . .	\$0.75	\$2.40	\$17.50
<b>CHEERFULNESS.</b> (Double Poetaz.) A double form of the famous cluster-flowering Daffodil, creamy white in color. Splendid for garden; late blooming and very fragrant. Received an Award of Merit. Frequently called the "Gardenia" Daffodil. L. . .	.55	1.75	12.00
<b>CHEERFULNESS YELLOW.</b> (Double Poetaz.) The yellow form of the variety above, having all the qualities of the older variety. Very fragrant. L. . . . .	1.00	3.25	24.00
<b>DAISY SCHAEFFER.</b> (Long-Cupped.) One of the best of the remarkable new long-cupped type. The flower is 4½ inches across with cup of nearly two inches. Resembles a Giant Trumpet, but much more graceful in form. Pure white perianth with cup opening primrose, turning to light canary-yellow, with a greenish overcast at the base. Long, lemon-yellow stigma and styles add to the color harmony of this remarkable flower, which has captured an Award of Merit and several First Class Certificates. ML. . . . .	1.00	3.25	24.00
<b>DICK WELLBAND.</b> (Short-Cupped.) An exhibition variety of great excellence. This variety stands out even in the largest collection of Daffodils. The perianth is pure white and the cup a brilliant flame-orange. The startling contrast between the petals and the cup makes this variety a great beauty. The color does not fade, but rather intensifies with age, and the flower has unusual lasting qualities. Highly recommended. M. . . . .	.60	2.00	14.00
<b>EL DORADO.</b> (Short-Cupped.) Bold perianth of golden yellow, with a flaring open cup of deeper golden yellow with frilled edge of orange. Spicy, sweet fragrance. M. . . . .	.60	2.00	14.00
<b>FEU ARDENTE.</b> (Short-Cupped.) Latest novelty. Sulphur-yellow perianth of moderate size, with flat, frilled disc of deep orange-red, measuring 1½ inches. Blossoms carried on strong and stiff stems. M. . . . .	.70	2.25	16.00
<b>FIREGLOW.</b> (Short-Cupped.) Golden yellow perianth formed by broad, overlapping petals, with a short ruffled cup edged orange-red changing to orange at the throat. Prolific bloomer. M. . . . .	.60	2.00	13.50
<b>FLORA TRISTAN.</b> (Short-Cupped.) Symmetrical perianth of deep yellow, medium size, with very wide open disclike cup of deep orange-yellow having a dark orange frilled edge. Long lasting. M. . . . .	.75	2.50	18.00
<b>FRANZ LISZT.</b> (Short-Cupped.) One of the most graciously formed and finest proportioned varieties, with white perianth turning to yellow at the base, and a yellow trumpet with narrow orange edge. Prolific bloomer with sweet fragrance. ML. . . . .	.75	2.50	18.00
<b>GARDEN OFFICER.</b> (Short-Cupped.) A very early variety and a prolific bloomer. White perianth with extending cup broadly edged orange-red, balance of cup deep yellow to throat. E. . . . .	.80	2.70	19.50



Beersheba

	Per 3	Doz.	100
<b>GENERAL MacARTHUR.</b> (Trumpet.) In our judgment, the largest and finest golden yellow Daffodil, of enormous size and good form, which leaves nothing to be desired. Late flowering, blooming after all the other trumpets are through. One of the largest flowers in existence. L. . . . .	\$1.20	\$4.00	\$30.00
<b>GERANIUM.</b> (Poetaz.) A most outstanding variety of the bunch-flowering types. Pure white perianth with small, clear orange cup, producing a minimum of four blossoms per stem. Heavy, Gardenia-like perfume. L. . . . .	.60	1.95	13.50



Luna



Cheerfulness

NARCISSUS OR DAFFODILS—  
Continued



General  
MacArthur

	Per 3	Doz.	100
<b>GOLDEN SCEPTER.</b> (Short-Cupped.) More gracefully proportioned than the giant trumpets; medium sized, perfectly built flower of deep jonquil-yellow. Three or more inches in diameter, star-shaped perianth, slightly lighter than the trumpet which is slightly rolled and flared at the edge. Long lasting qualities. Received Award of Merit and First Class Certificate. M. ....	\$0.45	\$1.50	\$10.00
<b>GOLDEN HARVEST.</b> (Trumpet.) An all golden yellow trumpet variety of fine form. Very early blooming, both in the garden and for forcing. E. ....	.70	2.30	16.50

	Per 3	Doz.	100
<b>GRETA GARBO.</b> (Long-Cupped.) A beauty and outstanding novelty. Yellow perianth with the largest flaring orange cup we have ever seen. Stock of this variety is extremely small and therefore we must limit the quantity. Advise planting in shady location. M. \$1.05	\$3.50	.....	
<b>HANS VAN MEEGEREN.</b> (Short-Cupped.) Golden yellow perianth with broad, overlapping petals of symmetrical form; wide open cup of deep golden yellow with a well defined edge of orange-red. Mildly fragrant. ME. ....	.75	2.50	18.00
<b>HAVELOCK.</b> (Long-Cupped.) Uniform deep yellow throughout with a large cup and broad, well formed perianth, early flowering. E. ....	.55	1.75	12.00
<b>IMPERATOR.</b> (Trumpet.) This lovely, graceful Daffodil is considered one of the finest varieties and the best in this class. Perianth and cup creamy white. L. ....	.85	2.75	20.00
<b>INDIAN CHIEF.</b> (Double.) A combination of red and yellow petals, making a tightly formed blossom. Very effective for its strong and unusual color contrast. Medium height. ML. ....	.60	2.00	14.00
<b>INSULINDE.</b> (Double.) Double, cream-yellow, interspersed with shorter petals of deep orange-red. This flower is not too double to be graceful, yet it is attractively full. Sweetly fragrant. M. ..	.75	2.40	17.50
<b>INSURPASSABLE.</b> (Trumpet.) Of the new, giant-flowered trumpets, we consider this variety the most outstanding early bloomer. All golden yellow perianth and trumpet of giant proportions. E. ....	.70	2.30	16.50
<b>JOHN DIX.</b> (Short-Cupped.) Pure white perianth with a small, dark orange crown about the size of a quarter which is very finely frilled. Very late, similar to La Riante, which is an earlier variety. Sweet fragrance. L. ..	.70	2.25	16.00
<b>KING ALFRED.</b> (Yellow Trumpet.) Received a First Class Certificate. An old favorite and still very good. The finest giant all-golden Narcissus. E. ....	.50	1.75	12.00
<b>LA RIANTE.</b> (Short-Cupped.) Greatly admired at the Spring Flower Shows in the Netherlands. Its beautiful white perianth is offset with a brilliant orange-red disc. Worth trying. Medium height with a decidedly sweet fragrance. M. ....	.70	2.25	16.00
<b>LUNA.</b> (Jonquil.) A recent introduction, which is, in our estimation, one of the very best of its type. Produces two to three large, very beautiful lemon-yellow flowers on each stem. Very fragrant. ML. ....	.60	2.00	14.00



Insulinde



Greta  
Garbo



Per 3 Doz. 100

**MARY COPELAND.** (Double.) An excellent novelty of the new, semi-double type, and termed the most striking new double. The longer petals are pure creamy white with a golden ray down the center, interspersed with shorter petals of lemon and brilliant orange, giving a three-color effect. Received a First Class Certificate. Very sweetly fragrant. L. .... \$0.80 \$2.70 \$19.50

**MARY HOLLIS.** (Short-Cupped.) Small perianth, but beautifully formed of cream overlaid with lemon-yellow, golden at the tips and center. All orange frilled cup of medium size. Mildly fragrant. ME. .75 2.50 18.00

**MATA HARI.** (Short-Cupped). Fine, symmetrical white perianth with nicely overlapping petals. Very large, flaring cup which opens orange and changes to golden yellow edged orange-bronze as the flower ages. ME. .... 1.00 3.25 .....

**MONIQUE.** (Short-Cupped.) Cream-white perianth of overlapping petals of perfect form. Yellow cup with a clearly defined edge of orange. A very nice variety. M. .... .60 2.00 14.00

**MONTE CARLO.** (Long-Cupped.) Deep golden yellow perianth with a ruffled and flaring golden yellow cup. A strong flower of unusual appeal. E. .... .60 2.00 14.00

**MONTGOMERY.** (Short-Cupped.) Medium yellow perianth with a bold, extending cup of clear orange-red, extending the full length of the cup. Tall grower and fragrant. M. .... .60 2.00 13.50

**MOZART.** (Short-Cupped.) Latest novelty with nice, overlapping perianth of cream-yellow having a dislike cup of uniformly deep scarlet and conspicuous stamens of deep yellow. An excellent new introduction. M. .... .65 2.15 15.00

**MRS. R. O. BACKHOUSE.** (Long-Cupped.) This is the famous "PINK DAFFODIL." Fine, informal perianth of ivory-white, elegantly proportioned, slim, long trumpet of apricot-pink, changing to shell-pink at the deeply fringed edge. Delicately beautiful but of exceptional substance. Long lasting. Belongs in every collection. L. . . .70 2.30 16.50

**MRS. WILLIAM COPELAND.** (Double.) Very large and pure white perianth. The cup segments are of a creamy tint which fades into white. A splendid flower and good increaser. Fragrant. L. .... .90 3.00 22.50



Flora Tristan

*Novelty*

**NARCISSUS COLLECTION**

Beersheba	Mary Hollis
Hans Van Meegeren	Mozart
Indian Chief	Mrs. R. O. Backhouse
Insurpassable	Ola Leavit

**3 EACH of 8 varieties (24 bulbs, labeled) \$6.15**

**6 EACH of 8 varieties ( 48 bulbs, labeled) 11.00**

**12 EACH of 8 varieties ( 96 bulbs, labeled) 20.00**

**25 EACH of 8 varieties (200 bulbs, labeled) 38.50**



Mary Copeland



Imperator

NARCISSUS OR DAFFODILS—Continued

Per 3 Doz. 100

<b>OLA LEAVIT.</b> (Short-Cupped.) Pure white perianth, with yellow cup edged orange-red. Not particularly striking at first sight but increasing in beauty as the flower ages. Delicately fragrant. M. ....	\$0.75	\$2.50	\$18.00
<b>ORANGE MAY.</b> (Short-Cupped.) Creamy yellow perianth of perfectly placed petals, which is attractively centered with a bright orange-red cup. It blooms when all the other varieties are gone. Very late ....	1.20	4.00	.....
<b>RED GUARD.</b> (Poetaz.) Another winner of an Award of Merit. Perianth of deepest golden yellow overlaid with salmon and a cup of fiery red, making a beautiful and unusual color combination. Heavy spicy odor. ML. ....	.65	2.15	15.00
<b>REMBRANDT.</b> (Trumpet.) We consider this the best early, all-yellow trumpet. The trumpet and perianth are extra large and of fine form throughout. E. ....	.65	2.15	15.00
<b>RICHARD WAGNER.</b> (Short-Cupped.) Pure white perianth of fine form, with flat, golden yellow cup having a narrow orange, frilled edge. The perfection of this variety is in its finest form for which hybridizers have been aiming. L. ....	.75	2.50	18.00
<b>ROBINHOOD.</b> (Trumpet.) A large flower, which blooms medium early. Golden yellow perianth of good form and trumpet of orange-yellow, producing an interesting color contrast. ME. ....	.70	2.35	17.00
<b>SATURNUS.</b> (Short-Cupped.) Large, pure white perianth and an unusually beautiful, deeply frilled, deep orange cup, producing a glorious and striking effect against the white background. Strong flower and unquestionably one of the finest. M. ....	.65	2.15	15.00
<b>SCARLET BEAUTY.</b> (Short-Cupped.) Light yellow perianth with a short, very ruffled cup broadly edged orange-red to golden yellow at the base. The red coloring of the cup intensifies with age. Tall and fragrant. M. ....	.70	2.30	16.50
<b>SCARLET ELEGANS.</b> (Short-Cupped.) Beautifully symmetrical blossoms of golden yellow with the cup broadly edged scarlet, base of cup golden yellow. Tall and strong. Fragrant. M. ....	.75	2.50	18.00
<b>SELMA LAGERLOF.</b> (Short-Cupped.) Pure white perianth, symmetrical, with a large flat cup broadly edged orange, which changes to salmon with age. Prolific bloomer. ME. ....	.75	2.50	18.00
<b>SENATOR WALLWORTH.</b> (Short-Cupped.) Pure white perianth of perfect form with a large flaring yellow cup which is faintly sprayed orange. Very prolific bloomer. Medium height. Sweet fragrance. M. ...	.90	3.00	22.00
<b>SMILING QUEEN.</b> (Short-Cupped.) Magnificently proportioned and overlapping pure white perianth, offset by a double, flaring, ruffled cup of orange, shading golden yellow to the throat. New and superbly beautiful—the only one of this kind we have ever seen. Spicy fragrance. ME. ....	1.35	4.50	.....
<b>SUPERBA.</b> (Short-Cupped.) A recent introduction of genuine merit, with an open perianth of canary-yellow, the petals of which curl backwards. Flat, flaring cup of deep orange-red, extending to the throat. M. ....	.65	2.15	15.00
<b>TEXAS.</b> (Double.) A large, well frilled flower of beautiful yellow, with pronounced orange-red interspersed inner petals. ME. ....	.70	2.25	16.00

**EXHIBITION COLLECTION OF NARCISSI**

Bustein Huett Cheerfulness	Dick Wellband Fireglow	King Alfred Monique	John Dix Robinhood	
3 EACH of 8 varieties ( 24 bulbs, labeled)				\$4.75
6 EACH of 8 varieties ( 48 bulbs, labeled)				8.75
12 EACH of 8 varieties ( 96 bulbs, labeled)				16.00
25 EACH of 8 varieties (200 bulbs, labeled)				29.75



New  
Smiling Queen



Ola Leavit  
Thalia



Mary  
Hollis

**NARCISSUS OR DAFFODILS—Continued**

Per 3 Doz. 100

**THALIA.** (Triandrus.) In addition to a peculiar attraction, at first sight this flower leaves one with an impression it is white, yet it is a whiteness that is not purely white. The recurving petals and the angle of the three trumpets are unlike the conventional short-cupped Daffodils. The stem is dark green, round and reedlike thin. Called the "Orchid-flower" Narcissus. E. ....\$0.85 \$2.75 \$20.00

**TUNIS.** (Long-Cupped.) An outstanding variety of this type, having broad white perianth, with large, bold, ivory cup, the brim of which is handsomely flanged and serrated, retaining a remarkable flush of pale coppery gold at the edge. An early bloomer, recommended. Mild, sweet fragrance. E. .... .70 2.35 17.00

**Newest Narcissi**

The varieties offered here are all new, having been received directly from the hybridizers. Each has been tested and tried in our nursery and all are outstanding for their beautiful form and fine proportions. Available only in limited quantities.

**ANJOU.** (Bicolor Trumpet.) Pure white perianth of perfect form, with wide, overlapping petals, and a deep golden yellow trumpet. A new bicolor trumpet of great promise. M. ....\$0.85 \$2.85 \$21.00

**ARTISTE.** (Short-Cupped.) Light yellow perianth. Short flaring cup of golden yellow, edged with a narrow orange border. The thing one notices at once is its artistic balance and proportions along with unusual substance and quality. .... .75 2.45 19.50

**EMRICH COLLMAN** (Short-Cupped.) Large, deep golden yellow perianth of very broad petals, overlapping and of good form. Wide open cup of deep golden yellow, edged orange-red. A very large flower for this type, tall growing and strong. Fragrant .....\$1.00 \$3.25 \$24.00

**GOLDEN CASTLE.** (Double.) A beautiful new all golden double. The trumpet is as double as a rose bud. On the outside of the trumpet shorter petals of irregular form extend from it. Delightfully fragrant. We are proud to offer this new novelty ..... 3.00 8.50 .....

**GOOD LUCK.** (Short-Cupped.) Perfect perianth of cream-yellow. Its flat, open cup of vivid red changes to orange at the base. Flowers are large and of heavy texture, borne on strong stems well above the foliage. Sweetly fragrant. Originated and introduced by Nelis Nurseries ..... 1.35 4.50 .....

**NELIS FAVORITE.** (Short-Cupped.) One of our own seedlings, introduced for the first time. Large, ruffled perianth of cream-yellow. The ruffled orange cup is interspersed with golden yellow tips. A most interesting novelty ..... 1.35 4.50 .....

**OTHELLO.** (Short-Cupped.) Straw-yellow perianth, deepening in color toward the center of the flower. Frilled, deep orange cup. Perfect form, free blooming and sweetly fragrant. ML. .... 1.20 4.00 .....

**PAPILLON BLANCHE.** (Short-Cupped.) Large, well proportioned and full perianth of a veined, creamy white. The open cup consists of six creamy white petals which overlap slightly and are lemon-yellow at the tip, blending to a deep green at the base. A flower of unusual beauty which never fails to draw attention. Still very scarce. .... 2.00 6.75 .....

**REINE BLANCHE.** (Short-Cupped.) Pure white perianth which is large and well proportioned. Finely ruffled and flaring cup which opens canary-yellow and changes to cream with a peach overcast. Delicate spicy fragrance. ME ..... 1.00 3.25 .....

**SMILING MARY.** (Short-Cupped.) Pure white perianth, crown of orange-yellow, bordered with vivid scarlet edge. Very late, fragrant ..... 1.50 5.00 .....

**VICTORY.** (Trumpet.) A magnificent golden yellow trumpet, with a broad overlapping perianth of rich old ivory coloring. The trumpet is well proportioned with beautiful ruffled edge. Flowers and stem of unusual strength. Originated and introduced by Nelis Nurseries, Inc. M. .... 2.00 6.75 .....



Selma Lagerlof

**Collection of Newest Introductions**  
 (Not including GOLDEN CASTLE)  
 1 each of 10 varieties not separately labeled \$4.35  
 3 each (labeled) \$12.50

Robinhood



Tunis



# Daffodils for Naturalizing

Suitable for Garden Display, Woodland Planting or Cutting

Practically any soil has been found suitable, and they are grown equally well in the open air as among trees and in woodland. Contains a mixture of large Trumpets, Short-Cupped, and Poeticus types, making a mixture that cannot be equalled for value and worth much more than we charge for them. Plant at least 8 inches deep, but avoid places where water may collect at any time, as they like drainage.

Try to plant before October 15th, or shortly thereafter, and place your order early, as the demand is increasing for these bulbs at this special low price which we have adopted. We cannot take orders for less than 50 bulbs. All are blooming size bulbs.

<b>50 bulbs for</b> .....	<b>\$ 3.50</b>
<b>100 bulbs for</b> .....	<b>6.75</b>
<b>250 bulbs for</b> .....	<b>15.85</b>
<b>1000 bulbs for</b> .....	<b>60.00</b>

## NELIS SUPER QUALITY DAFFODIL MIXTURE

To those of you who are interested in immediate results in a much better than average mixture, we are pleased to offer our Nelis Super-Quality Daffodil Mixture of super-quality bulbs. One of the most outstanding hybridizers of Daffodils is constantly supplying us with their entire crop of new hybrids, to which we have added the best of Yellow Trumpet and other high quality, standard named varieties. The result is an unsurpassable mixture of the widest possible range in color and blooming. Ideal for naturalizing where quality is desired and names are immaterial. All large, mature bulbs, which will give you a wealth of blooms at once, many producing as many as two or three flowers per bulb the first year after planting.

<b>25 bulbs for \$3.50, Postpaid</b>	<b>100 bulbs for \$12.00, Postpaid</b>
<b>50 bulbs for 6.50, Postpaid</b>	<b>250 bulbs for 29.00, Postpaid</b>



Paper-White Daffodils

## Paper Whites

French-Grown Bulbs Are Again Available

Paper-White Daffodils were not available for many years, because the quality available was not good enough to offer to our customers. the French-grown Paper-Whites which we can now supply are of first rate quality and ideal for indoor planting in pots, sand, gravel or fiber. Plant different lots every two weeks from October 1st to March 1st, and these bulbs will give you an abundance of beautiful fragrant flowers during the winter months. Not suitable for outdoor planting, except south of the Carolinas. We offer only Jumbo size or exhibition size bulbs.

\$1.75 per doz.      \$12.50 per 100

## BLUE GRAPE HYACINTHS for NATURALIZING

HEAVENLY BLUE. Blooming size bulbs. Height about 10 inches. These bulbs are ideal for bordering Daffodils.

### OUR SPECIAL PRICES

<b>50 bulbs for</b> .....	<b>\$1.75</b>
<b>100 bulbs for</b> .....	<b>3.45</b>
<b>250 bulbs for</b> .....	<b>8.00</b>
<b>1000 bulbs for</b> .....	<b>30.00</b>

## MUSCARI (Grape Hyacinth)

Top size bulbs. Ideal for naturalizing and cut flowers.

Heavenly Blue. 60c per doz.; \$4.50 per 100.

Azureum Album. White, new improved variety, much larger than old type, in fact as large as the Heavenly Blue Muscari. 95c per doz.; \$7.50 per 100.

Muscari,  
Heavenly Blue



Muscari Azureum Album



# GORGEOUS *Colchicums*

## Sensational Wonder Bulb

**The only bulbs that will bloom indoors without soil,  
without water, without care.**

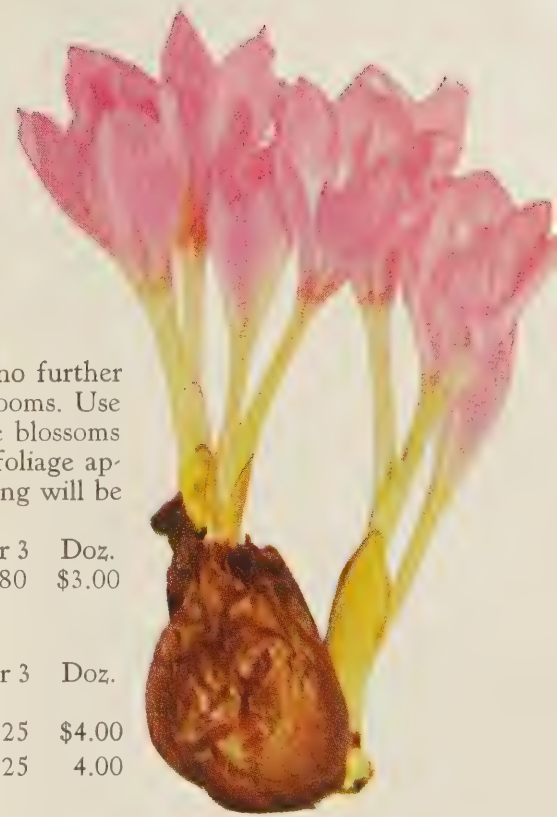
Place it, just as it is, on the mantel, window ledge or table and with no further attention on your part, it will reward you with its exquisitely lovely blooms. Use these bulbs for gifts. The usefulness of the bulbs does not end after the blossoms fade. Plant them outdoors in the fall and in the spring luxuriant green foliage appears. When the foliage has died down, dig up the bulbs and the blooming will be repeated indoors.

	Each	Per 3	Doz.
AUTUMNALE MAJOR. Lavender .....	\$0.30	\$0.80	\$3.00

### NEW GIANT-FLOWERING COLCHICUMS

	Each	Per 3	Doz.
AUTUMN QUEEN. Dark lilac, prolific and early. Highly recommended by us as the best of the new varieties .....	\$0.50	\$1.25	\$4.00
DAENDELS. Outstanding light purple flowers of large size. .50	.50	1.25	4.00

	Each	Per 3	Doz.
LILAC WONDER. Extra large flowers of clearest mauve. The largest number of flowers per bulb of any of the new type .....	\$0.50	\$1.25	\$4.00
THE GIANT. Soft violet. Early, very free blooming. Very large .....	.50	1.25	4.00
VIOLET QUEEN. Large, lilac-violet. We find this to be a particularly outstanding variety which we can highly recommend .....	.50	1.25	4.00



Collection of Named Colchicums		
<b>1 Each</b>	of the 6 varieties ( 6 bulbs, unlabeled) ..	<b>\$2.50</b>
<b>3 Each</b>	of the 6 varieties (18 bulbs, labeled) .....	<b>5.75</b>
<b>6 Each</b>	of the 6 varieties (36 bulbs, labeled) .....	<b>11.00</b>

**Order Early**



## *Lycoris*

(Squamigera)  
**Hardy Amaryllis Halli**

Produces attractive green foliage which grows from early spring until July, when it ripens and disappears. About a month later, as if by magic, the flower stalk springs from the ground to a height of 2 to 3 feet, developing an umbel of large, Lily-shaped flowers, 8 to 12 in number, of a delicate lilac-pink shade. The bulb is perfectly hardy. In planting, cover crown about 4 inches with soil. 75c each; 3 for \$2.00; \$6.75 per doz.

*Our Tulips this year have been the rage of the neighborhood. Their beauty has not been surpassed by any other garden anywhere in our vicinity.*

JACK CHESNE, Detroit, Mich.



Ixiolirion Pallasi

*New*

**IXIOLIRION PALLASI**

Lovely flowers of deep blue or violet, popularly called "Siberian Bluebell." Flowers in the spring and bulbs are hardy.

\$1.00 per doz. \$7.50 per 100

Erythronium



**MINIATURE  
FLOWERING  
BULBS**

To brighten up the border, for naturalizing in woodland, or for filling bare spots in rock gardens, these bulbs are perfect. They require little care and establish themselves without effort.

**SCILLA SIBIRICA**

Blue. Dainty little blue flowers, invaluable for edging borders, or massed in flower beds; hardy and very satisfactory. Height about 4 inches. 75c per doz.; \$5.75 per 100.

**NEW GIANT SCILLA  
CAMPANULATA**

These graceful new Scillas far surpass the old types. Ideal for cut flowers with their long stems, as well as for naturalizing. Thrive in full sun, partial shade or full shade. Bloom together with the late Tulips, when all other Hyacinths are through blooming.

**HEAVENLY BLUE.** Deep blue. \$1.00 per doz.; \$8.00 per 100.

**MYOSOTIS.** Light blue. \$1.00 per doz.; \$8.00 per 100.

**QUEEN OF THE PINKS.** Pink. \$1.00 per doz.; \$8.00 per 100.

**RHINELAND.** Rose. \$1.00 per doz.; \$8.00 per 100.

**WHITE TRIUMPHATOR.** White. \$1.00 per doz.; \$8.00 per 100.

**MIXED COLORS.** \$1.00 per doz.; \$8.00 per 100.

**PUSCHKINIA**

**LIBANOTICA.** Beautiful white flowers shaded and striped soft clear blue, height about 6 inches. Also easily grown as indoor pot plant. Prized for the permanent, hardy flower border and rock garden. Flowers in April. 80c per doz. \$5.75 per 100

**TRITELEIA—Milla**

**Uniflora Viola.** Somewhat resembles the Chionodoxa, it produces a pale violet-blue flower with white center in early spring and is delightfully fragrant. They are hardy but like a little protection. Rapid multipliers, they are excellent to plant in the rockery, under trees and shrubs, where nothing else will grow. Height 3 inches. 75c per doz. \$5.00 per 100

**ERYTHRONIUM**

Also Known as Trout Lilies or Dogs-Tooth Violets

These unique flowers which come in a wide range of colors, are further accentuated by their striking foliage bearing a mottled design. The flowers measure 3 to 5 inches across. Plant in partial shade in well drained soil, 2 to 3 inches deep. They are ideally suited for naturalizing and multiply rapidly after they become established. Early spring bloomers. \$1.75 per doz.; \$3.00 for 25; \$10.00 per 100.



Scilla Campanulata

**NEW  
LEUCOJUM VERNUM**

(Giant Snowdrops)

An early and most attractive spring flower, bearing nodding flowers of white tipped with green and grows around 10 to 12 inches high. They should be planted in early fall in good, well drained soil, 4 inches deep. Especially effective if planted in clumps, 4 to 5 inches apart. After they become well established they bloom more satisfactorily from year to year.

\$1.40 per doz. \$10.00 per 100

**CHIONODOXA**

(Glory-of-the-Snow)

These lovely, earliest of spring flowers of deep blue with a white center, attain a height of 7 inches and produce spikes bearing 10 to 15 Scilla-like flowers. Perfectly hardy and should be planted close together for best effect. 50c per doz.; \$3.50 per 100; \$30.00 per 1000.

Leucojum Vernum



Chionodoxa





English Iris

## IRIS "SHILKA"

(Vesper Iris)

The graceful filigree of the branches of these Vesper Iris is studded with from one to two hundred jewel-like flowers, truly a mammoth bouquet. The delicately colored blossoms, which at a distance resemble a multitude of gorgeous butterflies at rest with motionless outstretched wings, vary in color, including such hues as translucent lavender with markings of mahogany, lemon, copper and orange-brown. The Shilka Iris, which are exceedingly easy to grow,

bloom for a month during July and August when flowers are scarce. Vesper Iris resist both severe cold and intense heat with impunity. Be the first in your locality to grow this unique Iris. \$1.95 per 5; \$3.50 per 10.

## ENGLISH IRIS (Bulbous)

This magnificent mixture of bulbous English Iris has been developed at our nurseries, and contains all the choicest varieties which can possibly be had in these fine Iris. The English Iris are a bulbous Iris which bloom in our latitude about the early part of July, and come after all other bulbous Iris. They should be planted as soon after receiving them as possible for best results. They prefer the more moist and heavier soils, and should have good drainage. The blooms of the English Iris are considered to be the finest of any in the Iris class, and each individual bloom is strikingly beautiful, and as cut flowers they are unsurpassed. We are offering them in a fine mixture of colors. \$2.00 per doz.; \$14.00 per 100.

## IRIS RETICULATA

(Bulbous)

This lovely species is one of the treasures of the garden or rock garden. It can be described as a small form of the Dutch Iris, or Spanish Iris. Its main value lies in the fact that it can be forced into bloom in the house with the greatest ease. Six or eight bulbs put into a 4- to 5-inch pot when received will bloom about Christmas time. The fragrant blooms remind one of a bunch of fresh Violets. Perfectly hardy with reasonable protection. It is one of the loveliest early flowering bulbs for the rockery. \$1.40 per doz.; \$10.00 per 100.

## DUTCH IRIS (Bulbous)

A new and early flowering race coming into bloom just after the Tulips are gone. The flowers are large, resembling Orchids, and are distinctive and brilliant in color. Flowers of heavy texture and when cut have wonderful keeping qualities. Bulbs should be planted in the fall, 5 inches deep, in well drained soil, with a light protection after freezing weather sets in. Offered at new low prices.

	Doz.	100
IMPERATOR. 28 inches. Rich dark blue with a distinct yellow blotch; very large . . . . .	\$0.90	\$6.00
GOLDEN HARVEST. 28 inches. New. Lovely pure deep yellow . . . . .	.95	6.50
WHITE EXCELSIOR. 22 inches. Uniform pure white falls, very broad; of good form and substance . . . . .	.95	6.50
MIXED DUTCH IRIS. All colors mixed . . . . .	.90	6.00

[29]



Iris, Shilka



Dutch Iris



*New!*

## DWARF IRIS

These beautiful little Iris do not grow over four inches high, and bloom in April and May. They are fine for bordering flower beds, or planting in the rock garden. Many will bloom again in the fall. Order early.

**MIXED COLORS ONLY. \$2.60 per doz.; \$19.00 per 100.**

## Autumn-Flowering Iris

**Flowering Two or More Times Each Season, Both Spring and Fall.**

We take great pleasure in offering this list of the finest fall bloomers in cultivation. While best results are secured with these Iris below the Mason-Dixon Line, with a little care we have obtained excellent fall bloom in Michigan. Some of the varieties listed not only bloom profusely early in the spring, but under favorable conditions also produce crop after crop of flowers in late summer and fall.

	Each	Doz.
<b>AUTUMN ELF.</b> 22 inches. Ruffled standards of cream and flaring falls of soft lilac. . . . .	\$0.30	\$3.00
<b>AUTUMN HAZE.</b> 30 inches. New violet fragrance. Standards light lavender-violet with falls of Hyssop-violet. Giant fall bloomer . . . . .	.30	3.00
<b>BLACK MAGIC.</b> 26 inches. A fine and profuse fall bloomer. Deep blue-violet with rich velvety luster and black sheen . . . . .	.35	3.50
<b>GLADSONG.</b> 24 inches. Standards and falls yellow, with delicate veining of tan and brown . . . . .	.40	4.00
<b>SOUND MONEY.</b> 24 inches. A very free flowering fall bloomer of golden yellow. During past seasons these plants produced several flowers per plant . . .	.30	3.00
<b>ULTRA.</b> 20 inches. A new deep purple that blooms freely both spring and fall. . . . .	.30	3.00
<b>WHITE AUTUMN KING.</b> 30 inches. A beautiful silvery white, blooming profusely in spring and fall. A rapid multiplier . . . . .	.35	3.50

### AUTUMN-FLOWERING IRIS COLLECTION

<b>1 Each</b>	of 7 varieties ( 7 plants, unlabeled) . . . . .	<b>\$2.25</b>
<b>3 Each</b>	of 7 varieties (21 plants, labeled) . . . . .	<b>6.00</b>
<b>6 Each</b>	of 7 varieties (42 plants, labeled) . . . . .	<b>11.25</b>



Lilium Henryi





Lilium Candidum

## LILIUM CANDIDUM

(Madonna Lily)

Also known by many as "June Lilies." This is one of the oldest, loveliest and best known Lilies. It is the earliest outdoor garden Lily. You have often admired it with its rich perfume and snow-white flowers, 3 to 15 on a stem. It is very hardy, and will thrive in any light garden soil, with plenty of light and air.

Large Bulbs

Each, 60c; 3, \$1.50; doz., \$5.00

Medium Bulbs

Each, 45c; 3, \$1.20; doz., \$4.00

## LILIUM HENRYI

A vigorous Lily, reaching a maximum height of 6 feet. Flowers of deep orange-yellow, averaging 20 blossoms per plant. Easy growing in either heavy or light soils. 3 for \$1.35; \$4.50 per doz.

Lilium Tenuifolium



# Aristocratic, Hardy

## GARDEN LILIES

### REGAL LILIES

Regals give your garden a final touch of beauty. A wonderful new and hardy Lily, native of Northern China, and very easily grown. Grows 4 to 5 feet tall. Flowers are ivory-white, trumpet-shaped, with soft yellow throat; very fragrant. Bloom in July. Will give increased beauty for many years without transplanting.

Special Low Price for Fall Planting:

Large bulbs . . . . . Per three, \$1.50; per doz., \$5.50

Medium bulbs . . . . . Per three, \$1.20; per doz., \$4.00

### CROFT LILY

This new domestically grown Lily is perfectly hardy, purest white, growing to a height of 2 to 2½ feet during the months of July and August. Shipment of these Lilies will be made between October 15th and November 1st. 3 for \$1.50; \$5.00 per doz.



Lilium Auratum

## LILIUM AURATUM

"Gold Band Lily." One of the finest Lilies known. Its large, graceful, fragrant flowers of ivory-white are thickly studded with chocolate-crimson spots and striped golden yellow through the center of the flower. Bulbs are 8 to 9 inches in circumference. 3 for \$2.00; \$7.50 per doz.



Lilium Rubrum Maximowiczii

## LILIUM RUBRUM MAXIMOWICZI

Large flowers of orange-red which are spotted purple and brown, growing to a height of 4 to 5 feet. Japanese type Lily. Stem-rooting; plant 6 to 7 inches deep. 3 for \$1.20; \$4.00 per doz.

## LILIUM, ORANGE TRIUMPH

A startling new introduction of really brilliant orange, a crossing of Lilium Umbellatum and Lilium Croceum. It has created a remarkable enthusiasm in the Netherlands. Height 3½ feet, with erect flowers. This is an outstanding Lily, and a remarkably brilliant color. 3 for \$1.25; \$4.50 per doz.

## LILIUM TENUIFOLIUM, GOLDEN GLEAM

Golden yellow form of the Red Tenuifolium. It makes a nice companion plant for the Red Tenuifolium. 3 for 90c; \$3.00 per doz.

## LILIUM TENUIFOLIUM, RED

A dainty Lily with slender stems and grassy foliage, blooming in June or July, producing numerous showy scarlet flowers with reflexing petals. Prefers a sunny location, well drained soil. 3 for 75c; \$2.50 per doz.

## LILIUM RUBRUM

Rich ruby-carmine on white, stout of substance, and broad petals. This variety stands out prominently because of its vigorous growth as well as its size, and depth of coloring. 3 for \$1.75; \$6.75 per doz.

Lilium Rubrum







# Vitamin Cartridges



**NO SPECIAL  
NOZZLE  
NO SPRAYER  
NO EXTRA  
ATTACHMENTS  
TO BUY**

NEW—simple, easy, quick way to VITAMIZE your entire lawn and garden. Assure yourself of gorgeous, luxuriant flowers and a beautiful, attractive lawn that will be the envy of your friends and neighbors.

**NO FUSS—NO MESS—NO BOTHER**

Simply remove the nozzle from your garden hose, drop a VITAMIST Cartridge into the hose, replace the nozzle and turn on the water. **NOTHING ELSE LIKE IT.** One cartridge will VITAMIZE 1500 square feet.

**THIRTY WEEKS' SUPPLY . . . Postpaid \$1.00**  
Packed 30 cartridges in a box—enough to VITAMIZE 1500 square feet once a week for 30 weeks.

# Vitaloam

## The FIRST 100% ORGANIC SOIL CONDITIONER

VITALOAM is 100% pure (no filler). For flower beds use 30 to 50 pounds per 100 square feet. VITALOAM, first 100% organic soil-conditioner, contains no chemicals. Its bacteria cultures produce healthier, sturdier, insect repellent plants, hasten maturity and greatly increase yields. Odorless and finely pulverized, it is pleasant to use. Only one application is needed per season. VITALOAM fluffs and binds sandy soil, disintegrates clay soil and rejuvenates worn-out soil. VITALOAM has 800% moisture retention.

Use one part VITALOAM to 5 or 6 parts of soil. For old lawns spread 50 lbs. per 1000 square feet, for new lawns 100 lbs. per 750 square feet. You cannot use too much, will never burn. Water thoroughly after application.

As small shipments are too expensive for freight charges in proportion to the shipment, we cannot offer less than full bag lots. (1 bag 80 lbs.) Two bags will be shipped for nearly the same freight charges as one. Shipping point, Ohio. Shipped via freight or motor-freight.

**Price: \$7.80 per bag,  
containing 80 lbs. of Vitaloam  
Immediate Shipment**

## Superior Brand Peat Moss

Superior Brand Peat Moss is excellent as a mulch. In winter it protects plant roots from severe cold. Peat Moss is pure vegetable matter that improves soils.

Superior Brand Peat Moss is sold in bags, each containing two bushels. We ship by freight, charges collect. Shipping weight of two bags about 100 lbs. Do not order less than two bags.

**From 2 to 9 bags . . . . . \$1.65 per bag  
From 10 bags or over . . . . . 1.50 per bag**

Ready for Immediate Shipment



**NELIS NURSERIES, Inc., Holland, Mich.**

# For Beauty and Charm

Our 1952 catalog has been brought up to date on the latest and finest bulb varieties available from both domestic and imported stock. It is impossible to list all the varieties we grow and if you need one or more varieties not listed, please write us, we may have it.

---

5% cash discount on all orders paid in full by July 15, 1952.

---

**TERMS:** Order early. All stock will be shipped at the proper planting time and orders are filled in rotation. Send payment by postal, express or bank money order, or registered mail. Unregistered currency is sent at your own risk. No charge accounts will be accepted unless customer is well known to us and credit has been established.

All orders over \$3.00 will be prepaid in full, if ACCOMPANIED BY REMITTANCE; smaller orders must include an additional charge of 25c to cover cost of transportation and handling.

**C. O. D. SHIPMENTS.** We will book your order on receipt of 25% of the amount of the order. We will ship C.O.D. at planting time for the balance, but we will send the order PREPAID IF PAYMENT IS RECEIVED BEFORE SHIPMENT IS MADE. **1952 TULIP TIME FESTIVAL DATES:** May 14th through 18th. Blooming period of our Tulips, the month of May. Visitors always welcome. Write us a card and we shall be glad to advise when most varieties will be in bloom.

Mrs. Andrew Gera, from Dundee, Michigan, writes: This year again, as I have in the past ten years, I am sending for some more of your bulbs. I have had so many compliments and lots of people marvel at the beautiful colors and sizes of the blooms. I have seen blooms from other than Nelis Nurseries, and they can't hold a candle. I have been more than satisfied with Nelis bulbs . . .

Mr. Max I. Allen from N. Manchester, Indiana, writes: Your service in the past has been of unusual character, marked by promptness, careful packing and most excellent specimens . . .

Rev. George Miller, Galena, Illinois, writes: My Tulips last spring were the talk of the town and bloomed even nicer than they were pictured in your catalog. They were truly magnificent . . .

Elizabeth E. Fowler of Watertown, Mass., writes: My entire family and my friends have gardens full of loveliness thanks to your bulbs. My Tulips were so striking they were voted the loveliest display on our street. Many thanks to you, over and over each spring for your wonderful bulbs and your very nice service.

**COMPLETE INSTRUCTIONS FOR BOTH SHALLOW AND DEEP PLANTING ENCLOSED WITH YOUR ORDER. KINDLY FOLLOW INSTRUCTIONS AS GIVEN FOR BEST RESULTS.**

**FOR OUR CUSTOMERS IN THE DEEP SOUTH:** Ask for special instructions to be included with your order for locations in Florida, places bordering the Gulf of Mexico, and southern California. These new instructions will help you to have success with your bulbs where otherwise you have had failure.

---

**Nelis  
Nurseries  
Inc.  
Holland,  
Michigan**